



LAW no. 5 of 6 March 2000
on the Approval of the Spatial Planning of the National Territory
Section III - Protected Areas

LAW

ON THE APPROVAL OF THE SPATIAL PLANNING OF THE NATIONAL TERRITORY - SECTION III - PROTECTED AREAS

The Parliament of Romania has adopted this Law.

Art. 1 - (1) The Spatial Planning of the National Territory - Section III - protected areas is approved according to Annexes I-IV, that are an integral part of this Law.

(2) For the purposes of this Law, *protected areas* are natural or built-up zones, geographically and/or topographically defined, including values of the natural and/or cultural heritage and shall be declared as such with a view to attaining specific objectives concerning the conservation of the heritage values.

Art. 2 - This Law emphasizes the natural protected areas of national interest and identifies the values of the national cultural heritage, that require the setting up of protected areas in order to ensure the preservation of these values.

Art. 3 - The works of preservation, protection and valuation of the heritage in the protected areas are public utility causes of national interest.

Art. 4 - (1) The protected natural areas of national interest and the nature's monuments, as well as the geographic clustering and territorial location of the protected natural areas of national interest are stipulated in Annex I of this Law.

(2) A special law shall establish the conditions and organization in the protected natural areas of national interest.

Art. 5 - (1) The values of the cultural heritage of national interest are stipulated in annex no III of this Law.

(2) Within 12 months of the coming into force of this law, the authorities of the local public administration with the support of the central public authorities having competencies in this field, will define the protection areas of the values of cultural heritage, based on specialized studies, as stipulated in Annex III.

(3) With a view to setting up the protected areas the authorities of the local public administration will prepare the urban planning documents and their associated regulations, carried out and approved as by law, that will include the necessary protection and preservation actions of the values of the national cultural heritage in the area.

(4) Within 60 days of the coming into force of this Law the Ministry of Public Works

and Territorial Planning will elaborate the Methodology for the urban planning documents of protected built-up areas, that will be published in the Official Gazette of Romania.

Art.6 - The Annexes I and III of this Law can be periodically up dated as new values of the natural or cultural heritage are identified, or as the protected areas suffer alterations. The declaration and definition of protected areas corresponding to the new values of the heritage shall be carried out as by law.

Art. 7 - The provisions of the law on the Spatial Planning of the National Territory - Section III – protected areas are compulsory for all public administration authorities, both local and central, which will ensure the inclusion of these provisions into the territorial planning documents of counties, municipalities, towns and communes.

Art. 8 - (1) The necessary works for the preservation, research, restoration, protection, conservation and putting into account of the heritage in the protected areas of national interest shall be carried out only upon the written opinion and approval of the administrative authorities and scientific fora of the field, stipulated by law. These works shall be included in the investments lists - annex to the budgets of the main credit release authorities, based on the technical and economic documents prepared and approved according to the legal provisions, and shall be financed in completion up to the limits of the funds approved for this purpose by the annual budget laws.

(2) The works may be also totally or partially financed by other investors, natural or legal persons, according to the terms stipulated by law, from donations or other funds granted by international bodies or from financial sources obtained through bilateral or multilateral conventions.

Art. 9 - Breaching of the provisions on the preservation and protection of the protected areas entails civil, contraventional or penal liability, according to law.

Art. 10 - (1) Until the definition of the protected areas of cultural heritage values by specialized studies, as stipulated in Annex III, according to Article 2 (2), protection zones

of 100 m shall be established for the historical monuments in cities and towns, of 200 m in communes and of 500 m outside towns.

(2) - The distances shall be measured from the external margin of the plot corresponding to the historical monuments defined in Article 1 (2) of the Government Ordinance no 68/1994 on the national cultural heritage protection approved by Law no. 41/1995.

Art. 11. - On the date of entering in force of this law the provisions concerning the

notification of the works in the protection areas of the monuments, as stipulated in Article 6 a) of Government Ordinance no. 27/1992 on certain actions for the protection of national cultural heritage, published in the Official Journal of Romania, Part I, no. 215 of August 28, 1992, with subsequent amendments, shall not be applied for the values of national cultural heritage set out in Annex III of this Law

The Senate has adopted this Law in its session of December 28, 1999 pursuant to the provisions of Article 74 (1) of the Constitution of Romania.

PRESIDENT OF THE SENATE
MIRCEA IONESCU QUINTUS

The Chamber of Deputies has adopted this Law in its session of February 8, 2000 pursuant to the provisions of Article 74 (1) of the Constitution of Romania.

For the PRESIDENT OF THE CHAMBER OF DEPUTIES
VASILE LUPU

Bucharest, March 6, 2000.
No. 5

ANNEX No 1

PROTECTED NATURAL AREAS OF NATIONAL INTEREST AND NATURE'S MONUMENTS*

1.0 Biosphere reserves, national or natural parks

Position	Name	Surface (ha)	County
A	The Danube Delta	580,000.00	Tulcea, Constanța
B	The Domogled - Cerna Valley	60,100.00	Caraș-Severin, Mehedinți, Gorj
C	Retezat	38,047.00	Hunedoara
D	Porțile de Fier	115,655.80	Caraș-Severin, Mehedinți
E	The Nera-Beușnița Quays	37,100.00	Caraș-Severin

*Prepared according to the existing data on October 1, 1998, pursuant to the provisions of the Law No. 137/1995 on the environmental protection.

Under the Law, the Danube Delta is considered a biosphere reserve, a natural site of the world natural heritage and a wet zone of international importance (Ramsar site).

According to UNESCO Programme – Man and the Biosphere certain areas of the Retezat and Rodna natural parks are considered biosphere reserves.

The abbreviations PN, DD in 2.0 of this Annex shall have the following meanings:

PN – nature reserves included in the area of the national or natural parks;

DD – nature reserves included in the Danube Delta Biosphere Reserve.

F	The Apuseni Mountains	75,784.00	Alba, Bihor, Cluj
G	Rodna	46,399.00	Bistrița-Năsăud, Maramureș, Suceava
H	Bucegi	32,663.00	Argeș, Brașov, Dambovița, Prahova
I	The Bicaz-Hășmaș Quays	6,575.00	Neamț, Harghita
J	Ceahlău	8,396.00	Neamț
K	Călimani	24,041.00	Bistrița-Năsăud, Suceava, Mureș
L	Cozia	17,100.00	Valcea
M	Piatra Craiului	14,800.00	Argeș, Brașov
N	Grădiștea Muncelului - Cioclovina	10,000.00	Hunedoara
O	The Semenici - Sarașului Quays	36,664.80	Caraș - Severin
P	The Măcinului Mountains	11,321.00	Tulcea
R	Balta Mică a Brăilei	17,529.00	Brăila

2.0. Nature reserves and monuments

Item no	Name	Location	Surface (ha)
0	1	2	3
2.1	Detunata Goală	Commune of Bucium	24.00
2.2	Râpa Roșie	Town of Sebeș	25.00
2.3	Detunata Flocoasa	Commune of Bucium	5.00
2.4	Pinteni din Coasta Jinei	Commune of Șugag, village of Dobra	1.00
2.5	Oul Arșiței	Commune of Săsciori, village of Tonea and Commune of Pianu	0.20
2.6	Masa Jidovului	Commune of Șugag, village of Tău Bistra	0.20
2.7	Stâncă Grunzii	Commune of Șugag, village of Tău Bistra	0.20
2.8	Piatra Despicață	Commune of Roșia Montană	0.20
2.9	The Vânătărele Ponorului Cave	Commune of Ponor	5.00
2.10	The Cave of Scărișoara Glacier	Commune of Gârda de Sus	(1.00)
2.11	PN - F The Cave of the Berg from Vârtopeș	Commune of Arieșeni, village of Casa de Piatră	(1.00)
2.12	The Râmețului Quays	Commune of Râmeț, village of Valea Mănăstirii	40.00
2.13	Huda lui Păpară PN-F	Commune of Sălciua, village of Sub Piatră	(4.50)
2.14	The Vidolm Forest	Commune of Ocoliş, village of Vidolm	44.20
2.15	The daffodils Glade of Negruleasa	Commune of Bucium	5.00
2.16	Molhașurile Căpățânei	Commune of Bistra	5.00
2.17	The daffodils Glades of Tecșești	Commune of Întregalde, village of Tecșești	2.00
2.18	Șurianul Mountain Lake	Town of Cugir	20.00
2.19	The Limestones of Ampoița	Commune of Meteș, village of Ampoița	10.00
2.20	The Întregalde Quays	Commune of Întregalde, village of Modolești	25.00
2.21	Vălișoarei Quays	Commune of Livezile, village of Vălișoara	20.00
2.22	Șesul Craiului - Scărița Belioara	Commune of Poșaga, village of Poșaga de Sus	47.70
2.23	The limestones of Piatra Corbului	Commune of Meteș	2.00
2.24	Dealul cu Melci	Commune of Vidra	5.00
2.25	Pârâul Bobii	City of Aiud, village of Gârbova de Sus	1.50

0	1	2	3
2.26	The limestones of Valea Mică	Town of Zlatna, village of Valea Mică	1.00
2.27	The Sloboda Forest	City of Aiud	20.00
2.28	The Ighiel mountain lake	Commune of Ighiu, village of Ighiel	20.00
2.29	The bootomless lake of Băgău	Lopadea Nouă	7.40
2.30	The Gârđișoarei Quays PN-F	Commune of Arieșeni	(15.00)
2.31	The Ordâncușei Quays PN-F	Commune of Gârda de Sus	(10.00)
2.32	The Albacului Quays PN-F	Commune of Albac	(35.00)
2.33	The Văii Morilor Quays	Comune of Vidra, village of Ponorel	30.00
2.34	The Poșegii Quays	Commune of Poșaga, village of Poșaga de Sus	10.00
2.35	The Runcului Quays	Commune of Ocoliș, village of Runc	20.00
2.36	The Pociovaliștei Quays	Commune of Ocoliș, village of Runc	25.00
2.37	The Glodului Quays	Commune of Almeșu Mare, village of Glod	20.00
2.38	The Cibului Quays	Commune of Almașu Mare	15.00
2.39	The Caprei Quays	Zlatna town, village of Feneș	15.00
2.40	Ampoiței Quays	Commune of Meteș, village of Lunca Ampoiței	15.00
2.41	The Văii Cetății Quays	Commune of Galda de Jos	10.00
2.42	The Galdiței and Turcului Quays	Commune of Întregalde	80.00
2.43	The Vârciorog waterfall	Commune of Arieșeni	5.00
2.44	The Pisoaia waterfall	Comune of Vidra, village of Nemeși	5.00
2.45	Piatra Ceții	Commune of Întregalde	75.00
2.46	Luncile Prigoanei	Commune of Șugag	15.00
2.47	Piatra Bulbuci	Town of Zlatna, village of Feneș	3.00
2.48	Piatra Tomii	Commune of Ceru Băcăinți, village of Bulbuc	1.00
2.49	Piatra Varului	Commune of Meteș	1.00
2.50	Piatra Boului	Commune of Meteș	3.00
2.51	Piatra Poienii	Commune of Ighiu, village of Ighiel	1.00
2.52	Piatra Grohotișului	Commune of Ighiu, village of Ighiel	5.00
2.53	Bulzul Gălzii	Commune of Galda de Jos	3.00
2.54	The Gălzii Quays	Commune of Galda de Jos	1.00
2.55	The Tecșeștilor Quays	Commune of Întregalde	5.00
2.56	The Pravului Quays	Commune of Râmeș, village of Cheia	3.00
2.57	The Piatra Bălții Quays	Commune of Râmeș, village of Cheia	2.00
2.58	The Geogelului Quays	Commune of Ponor	5.00
2.59	The Plaiului Quays	Commune of Livezile	2.00
2.60	Ravine of Hoanca Urzicarului PN-F	Commune of Roșia Montană, village of Vârtop	(1.00)
2.61	Coiba Mică PN-F	Commune of Arieșeni, village of Casa de Piatră	(1.00)
2.62	Coiba Mare PN-F	Commune of Arieșeni, village of Casa de Piatră	(1.00)
2.63	The Vârtopașu Cave	Commune of Arieșeni, village of Casa de Piatră	1.00
2.64	Huda Orbului PN-F	Commune of Arieșeni, village of Casa de Piatră	(1.00)
2.65	Hodobana PN-F	Commune of Arieșeni, village of Hobodana	(1.00)
2.66	Ravine with two entrances PN-F	Commune of Arieșeni, village of Hobodana	(1.00)
2.67	Izbucul Tăuzului PN-F	Commune of Arieșeni, village of Hobodana	(1.00)
2.68	Hoanca Apei	Commune of Gârda de Sus	(1.00)
2.69	Ravine of Tău PN-F	Commune of Gârda de Sus	(1.00)
2.70	Pojarul Poliței PN-F	Commune of Gârda de Sus	(1.00)

0	1	2	3
2.71	Ravine in the plains PN-F	Commune of Gârda de Sus	(1.00)
2.72	Izbucul Poliței PN-F	Commune of Gârda de Sus	(0.20)
2.73	Izbucul Cotețul Dobreștilor PN-F	Commune of Gârda de Sus	(0.20)
2.74	The cave under Zgurăști PN-F	Commune of Gârda de Sus	(1.00)
2.75	The cave of Poarta lui Ionele PN-F	Commune of Gârda de Sus	(0.10)
2.76	The Dirninii Cave PN-F	Commune of Horea, village of Mățișești	(1.00)
2.77	Izbucul Mățișești PN-F	Commune of Horea, village of Mățișești	(1.00)
2.78	The Lucia Caves	Commune of Sobodol	1.00
2.79	The Groși Cave	Commune of Sălciua, village of Sub Piatră	1.00
2.80	The Mândruțului Quays	Commune of Scărișoara	3.50
2.81	The Silosului Quays	Commune of Rimetea, village of Colțești	3.00
2.82	The Mănăstirii Quays	Commune of Râmeț, village of Valea Mănăstirii	15.00
2.83	Piatra Corbului	Commune of Roșia Montana	5.00
County of Arad			
2.84	The Valea Morii Cave	Commune of Moneasa	5.00
2.85	Dosul Laurului	Commune of Gurahonț, village of Zimbru	32.20
2.86	Gurahonț Moors	Commune of Gurahonț	2.00
2.87	Runcu-Groși	Commune of Bârzava	261.80
2.88	The Rovina daffodils Glade	The town of Ineu	0.10
2.89	The Rovina Pond	The town of Ineu	120.00
2.90	The Șoimoș Pond	The town of Lipova	1.00
2.91	The Sic Forest	Commune of Cărand, village of Seliște	17.80
2.92	Duțu's Cave	Commune of Săvârșin, village of Căprioara	0.10
2.93	Sinesie Cave	Commune of Săvârșin	0.10
2.94	The fossiliferous place of Monorostia	Commune of Bârzava	0.10
2.95	The fossiliferous place of Zăbalț	Commune of Dorgoș, village of Ususău and Zăbalț	5.00
2.96	The oak forest of Cărand	Commune of Cărand	2.10
2.97	The salted soils reserve	Commune of Socodol	95.00
2.98	The Macea stand	Commune of Macea	20.50
County of Argeș			
2.99	The Carst microrelief from Cetățeni	Commune of Cetățeni	10.00
2.100	The Granite from Albești	Commune of Albești de Muscel	0.50
2.101	The fossiliferous place of Suslănești	Commune of Mioarele, village of Suslănești	3.50
2.102	The nummulitic limestone from Albești	Commune of Albești de Muscel	1.50
2.103	The Negrași daffodil Glade	Commune of Negrași	4.10
2.104	The Carst area-Dâmbovița Quays-Dâmbovicioara- Brusturet PN-M	Communes of Rucăr and Dâmbovicioara	(2,000.00)
2.105	The alpine glade Moldoveanu-Capra	Communes of Arefu and Nucșoara	5,000.00
2.106	The cave of Piscul Negru	Commune of Arefu	0.50

0	1	2	3
2.107	The Dobreștilor cave	Commune of Dâmbovicioara	0.50
2.108	The cave no. 15	Commune of Dâmbovicioara	0.50
2.109	The Dâmbovicioara cave PN-M	Commune of Dâmbovicioara	(0.50)
2.110	The Uluce cave PN-M	Commune of Dâmbovicioara	(0.50)
2.111	The Stanciului cave PN-M	Commune of Dâmbovicioara	(0.50)
2.112	The ravine of Grind	Commune of Dâmbovicioara	0.50
2.113	The Iezer lake	Commune of Nucșoara	0.60
2.114	The Zărna lake	Commune of Rucăr	0.50
2.115	The Jghebuoasa lake	Commune of Rucăr	2.00
2.116	The Hârtop I lake	Commune of Rucăr	0.30
2.117	The Hârtop II lake	Commune of Rucăr	0.35
2.118	The Hârtop V lake	Commune of Rucăr	1.00
2.119	The Mănăstirii lake	Commune of Rucăr	0.60
2.120	The Valea Rea lake	Commune of Rucăr	0.50
2.121	The Buda lake	Commune of Nucșoara	0.40
2.122	The Izvorul-Mușeteică lakes	Commune of Nucșoara	0.30
2.123	The Scărișoara Galbenă lake	Commune of Rucăr	2.00
2.124	The Galbena IV lake	Commune of Rucăr	0.20
2.125	The Vâlsanului Valley	Communes of Mușătești, Brăduleț, Arefu, Nucșoara	10,000.00
County of Bacău			
2.126	The Perchiu hill	City of Onești	90.00
2.127	The Runc forest	The town of Buhuși, town Runcu	57.50
2.128	The Izvorul Alb forest	The town of Dărmănești	3.00
2.129	The Arsura forest	Commune of Mărgineni	34.50
2.130	The Pine forest	The town of Moinești	15.00
2.131	The Tuff from Uzului Valley	Town of Dărmănești	0.10
2.132	The Tuff from Falcău	The town of Slănic-Moldova	0.10
2.133	Cinerites from Nutasca- Ruseni	Commune of Cleja	0.10
2.134	The alder trees reserve from Doftoana	Commune of Doftoana	0.10
2.135	The fossiliferous point La Runc	Commune of Gura Văii	0.10
2.136	The fossiliferous point Cârligata	Commune of Mărgineni	0.10
2.137	Typical layers for the 'Pietrosu Strata'	Commune of Mărgineni	0.10
2.138	The fossiliferous points in Pietricica conglomerates	Commune of Nicolae Bălcescu	0.10
2.139	Typical layers of the 'Supan Strata'	The town of Comănești	0.10
2.140	Limestones with Lithothamnium	The town of Slănic-Moldova, town Cireșoiaia	0.10
County of Bihor			
2.141	The Ruginoasa pit-Valea Seacă PN-F	The town of Nucet, village of Băița	(20.40)
2.142	Pietrele Galbenei PN-F	Commune of Pietroasa	(6.30)
2.143	The Bulzului PN-F	Commune of Pietroasa	(1.40)
2.144	The Focul Viu Glacier PN-F	Commune of Pietroasa	(0.10)

0	1	2	3
2.145	Ravine of Borțigului PN-F	Commune of Pietroasa	(0.10)
2.146	The Buteasa Peak	Commune of Bulz	2.00
2.147	Izbucelor Valley PN-F	Commune of Pietroasa	(80.00)
2.148	The Izvoarelor Crișul Pietros hay field PN-F	Commune of Pietroasa	(1.00)
2.149	The Ponorului fortresses PN-F	Commune of Pietroasa	(14.90)
2.150	The Galbenei Valley PN-F	Commune of Pietroasa	(70.50)
2.151	Sighiștelului Valley PN-F	Commune of Câmpani, village of Sighiștel	(412.60)
2.152	The Stones of Boghii PN-F	Commune of Pietroasa	(38.40)
2.153	Săritoarea Bohodeiului PN-F	Commune of Pietroasa	(32.90)
2.154	The Fortress of Rădesei PN-F	Commune of Budureasa	(20.00)
2.155	The Flowers Glade PN-F	Commune of Pietroasa	(1.00)
2.156	The Carst Plateau Padiș PN-F	Commune of Pietroasa	(39.00)
2.157	The Bălileasa depression	Commune of Pietroasa	–
2.158	The pit from Bârsa PN-F	Commune of Pietroasa	(30.00)
2.159	The Biserica Moțului Peak PN-F	Commune of Pietroasa	(3.00)
2.160	The Lumea Pierdută Carst Plateau PN-F	Commune of Pietroasa	(39.00)
2.161	“Izbucul intermitent” of Călugări	Commune of Cărpinet	14.40
2.162	The Valea Roșie hay field	Commune of Cetariu, village of Săldăbagiu de Munte	4.00
2.163	Ferice Plai și Hoanca	Commune of Buntești	0.10
2.164	Câmpeneasa Ravine with Izbucul Boiu	The town of Vașcău	1.00
2.165	The Crișului Repede Pass	Commune of Vadul Crișului	219.70
2.166	The Ciurului Ponor Cave	Commune of Roșia	1.00
2.167	The Ciurului Izbuc Cave	Commune of Roșia	0.10
2.168	The Osoiu Cave	Commune of Vârciorog, Village of Fâșca	0.10
2.169	The Urșilor-Chișcău Cave	Commune of Pietroasa, village of Chișcău	1.00
2.170	The Valea Leșului Cave	Commune of Bulz	0.10
2.171	The Vântului Cave	Commune of Șuncuiuş	0.10
2.172	The Cave of Micula	Commune of Pietroasa, village of Giulești	0.10
2.173	The Gălășeni Cave	Commune of Măgești, village of Gălășeni	0.10
2.174	The Crișului Negru Pass in Borz	Commune of Șoimi, village of Borz	12.00
2.175	The daffodil Glade from Oșorhei	Commune of Oșorhei	2.00
2.176	The Cărligați Peak (The Southern Mountainside) PN-F	Commune of Budureasa	(10.00)
2.177	The Pețea Stream	Commune of Sânmărtin	4.00
2.178	The Păcău Hill	Commune of Șoimi	15.00
2.179	The Goroniște daffodil glade	Commune of Tinca	1.00
2.180	Piatra Grăitoare (S-E side of Brăiasa)	Commune of Budureasa	5.00
2.181	The Iadei Valley with <i>Syringa josichaea</i>	Commune of Bulz, village of Remeți	2.00
2.182	The Pastura land with <i>Corynephorus</i> from Voievozi	Commune of Simian	5.00
2.183	The Valea Rece hydrographic compound	Commune of Sălacea	2.00
2.184	The Cicoș Lake	Commune of Săcuieni	10.00

0	1	2	3
2.185	Gruitul Pietrii	Commune of Lugașu de Jos	0.40
2.186	The tortonian limestones from Miheleu	Commune of Lăzăreni	0.10
2.187	The fossiliferous place from Șimleului Hill	Commune of Sânmartin, village of Betfia	5.00
2.188	The tortonian limestones from Tășad	Commune of Drăgești	0.40
2.189	The fossiliferous place from Lionii Valley - Peștiș	The town of Aleșd, village of Peștiș	0.01
2.190	The Lens 204 of Brusturi - Cornet	Commune of Aștileu	0.10
2.191	The limestones from Crișului Valley	Commune of Bratca	0.40
2.192	The fossiliferous place from Cornițel	Commune of Borod	0.01
2.193	The Meziad Cave	Commune of Remetea	0.10
2.194	The Birds colony in Radvani Forest	Commune of Cefa	3.00
2.195	The Răbăgani mezothermal springs	Commune of Răbăgani	0.50
2.196	The Vacii Cave	Commune of Roșia	0.10
2.197	The Grust Cave	Commune of Roșia	0.10
2.198	The Igrîța Cave	Commune of Aștileu	0.10
2.199	The Farcz Cave	Commune of Roșia	0.10
2.200	The Toplița Cave	Commune of Dobrești	0.10

County of Bistrița - Năsăud

2.201	Piatra Corbului	Commune of Cetate, village of Budacu de Sus	5.00
2.202	The Salt Mountain from Sărățel	Commune of Șieu-Măgheruș, village of Sărățel	5.00
2.203	The La Gloduri mud volcanoes	Commune of Monor	2.00
2.204	Râpa cu păpuși	Commune of Mărișelu, village of Domnești	2.00
2.205	Zăvoaiele Borcutului	Commune of Romuli	1.00
2.206	The Tăușoare Cave	Commune of Rebrîșoara	71.00
2.207	The daffodil glade in Șesul Mogoșenilor	Commune of Nimigea	6.00
2.208	La Sărătură	Commune of Șintereag, village of Blăjenii de Jos	5.00
2.209	The daffodil glade in the Saca Mountain	Commune of Rodna, village of Valea Vinului	5.00
2.210	The daffodil glade in Șesul Văii Budacului	Commune of Cetate, village of Orheiu Bistriței	6.00
2.211	The Fântânele Stone	Commune of Prundul Bârgăului	5.00
2.212	The Cușmei Stone	Commune of Livezile, village of Cușma	5.00
2.213	The Poșmuș forest	Commune of Șieu - Măgheruș	2.00
2.214	The Repedea Valley	Commune of Bistrița - Bârgăului	222.00
2.215	Tăul Zânelor	Commune of Bistrița - Bârgăului	15.00
2.216	The Zagra lake	Commune of Zagra	1.00
2.217	The Râpa Mare fossiliferous place	Commune of Cetate, village of Budacu de Sus	1.00
2.218	The Bistriței Ardelene Quays	Commune of Bistrița - Bârgăului	50.00
2.219	The cave from Cobășelului valley	Commune of Șanț	1.00

0	1	2	3
2.220	Râpa Verde	Commune of Cetate, village of Budacu de Sus	1.00
2.221	Comarnic	Commune of Livezile	5.00
2.222	Ravine of Larion	Commune of Lunca Ilvei	250.00
2.223	The Mihăiesei springs	Commune of Maieru, village of Anieș	50.00
2.224	The Tătarului Cliffs	Commune of Bistra Bârgăului	25.00
2.225	Ineu-Lala PN-G	Commune of Șanț, Leșu, Rodna	(2,568.00)
County of Botoșani			
2.226	The Ștefănești stone	Commune of Ștefănești	1.00
2.227	The moor from Dersca	Commune of Dersca	10.00
2.228	Bucecea - The Siretului Ponds	Commune of Bececea	2.00
2.229	The Ripiceni Stone	Commune of Ripiceni	1.00
2.230	The Ciornohal forest	Commune of Călărași	76.50
2.231	The Tudora forest	Commune of Tudora	117.60
2.232	The Horlăceni alder forest	Commune of Șendriceni	5.00
2.233	The Stuhuosa century-old beech forest	Commune of Suharău	60.70
County of Brașov			
2.234	Bucegi (Bucșuiu, Mălăești, Gaura Mountainsides) PN-H	The town of Râșnov, Communes of Bran, Moieciu	(1,634.00)
2.235	The fossiliferous place from Vama Strunga PN-H	Commune of Moieciu	(10.00)
2.236	Piatra-Craiului PN-M	The town of Zărnești	(1,459.00)
2.237	The Zărneștilor Quays PN-M	Commune of Moieciu	(109.80)
2.238	The Basalt stone of Rupea	The town of Rupea	9.00
2.239	The Basalt columns of Racoș	Commune of Racoș	1.10
2.240	The basalt column of Piatra Cioplită	Commune of Comana, village of Comana de Jos	1.00
2.241	The Mud Volcanoes of Băile Homorod	Commune of Homorod	0.10
2.242	The basalt micro-canyon from Hoghiz	Commune of Hoghiz	2.00
2.243	The Dopca Quays	Commune of Hoghiz	4.00
2.244	The Ormeniș fossiliferous place	Commune of Ormeniș	4.00
2.245	The Carhaga fossiliferous place	Commune of Racoș	1.60
2.246	The Purcăreni fossiliferous place	Commune of Tărlungeni	0.20
2.247	The Bârlogul Ursului Cave	Commune of Apața	1.00
2.248	The Valea Cetății Cave	The town of Râșnov	1.00
2.249	The Liliacilor Cave	Commune of Moieciu	1.00
2.250	The daffodil glades from Dumbrava Vadului	Commune of Șercaia, village of Vad	394.90
2.251	The Cetății Hill- Lempes	Commune of Hărman	274.50
2.252	The Hărman Marsh	Commune of Hărman	2.00
2.253	Postăvarul (The Mountain)	City of Brașov	1,025.50
2.254	Cotul Turnuzului	Commune of Hoghiz	0.20
2.255	Tâmpa (The Mountain)	City of Brașov	188.20
2.256	Stejerișul Mare	City of Brașov	16.30

0	1	2	3
2.257	The Bogății Forest	Communes of Măieruș and Hoghiz	8.50
2.258	The eutrophic forest and marshes from Prejmer	Commune of Prejmer	252.00
County of Brăila			
2.259	The Camenița Forest	Commune of Șutești	1.30
2.260	The Jirlău-Vișani lake	Communes of Jirlău, Vișani Galbenu	930.00
County of Buzău			
2.261	The Pâclele Mari Mud Volcanoes	Commune of Scorțoasa	15.20
2.262	The Pâclele Mici Mud Volcanoes	Commune of Berca	10.20
2.263	Sarea lui Buzău	Commune of Viperești	0.80
2.264	The Lime blocks of Bădila	Commune of Viperești	1.00
2.265	The Crivineni forest	Commune of Pătârlagele	14.10
2.266	The Brădeanu forest	Commune of Brădeanu	5.80
2.267	The Meledic Plateau	Commune of Mânzălești	67.50
2.268	The 'Lacurile Bisoca' forest	Commune of Bisoca	10.00
2.269	Dealul cu Lilieci Cernătești	Commune of Cernătești	3.00
2.270	The yew tree forest	Commune of Chiojdu	150.00
2.271	Balta Albă	Commune of Balta Albă	600.00
2.272	Balta Amară	Commune of Balta Albă	900.00
2.273	Focul Viu - Lopătari	Commune of Lopătari	0.03
2.274	Piatra Albă 'La Grunj'	Commune of Mânzălești	0.025
2.275	The Amber of Buzău	Commune of Colți	2.52
County of Caraș - Severin			
2.276	The Reserve of Nerei Quays- Beușnița PN-E	Communes of Sasca Montană and Sopotul Nou	(3,081.30)
2.277	The Ciclovei-Ilidia Valley PN-E	Commune of Ciclova Română	(1,865.60)
2.278	The Șușarei Quays PN-E	Commune of Sasca Montană	(246.00)
2.279	The Bigăr Spring PN-E	Commune of Bozovici	(176.60)
2.280	Lisovacea PN-E	Communes of Bozovici and Lăpușnicu Mare	(33.00)
2.281	Ducin PN-E	Commune of Lăpușnicu Mare	(260.70)
2.282	The Carașului Quays PN-O	Commune of Carașova	(3,028.30)
2.283	The Carașului Springs PN-O	The town of Anina	(578.00)
2.284	The Nerei Springs PN-O	Commune of Prigor	(5,028.00)
2.285	The Gârliștei Quays PN-O	The town of Anina, Commune of Goruia	(517.00)
2.286	Bârzavița PN-O	Commune of Văliug	(3,406.90)
2.287	Buhui- Marghitaș PN-O	The town of Anina	(979.00)
2.288	The Comarnic Cave PN-O	Commune of Carașova	(0.10)
2.289	The Popovăț Cave PN-O	Commune of Carașova	(0.10)
2.290	The Buhui Cave PN-O	The town of Anina	(0.10)
2.291	Groposu PN-O	City of Reșița	(883.60)
2.292	The Domogled Reserve PN-B	The town of Băile Herculane	(2,382.80)
2.293	Coronini - Bedina PN-B	The town of Băile Herculane, Commune of Mehadia	(3,864.80)

0	1	2	3
2.294	Iauna - Craiova PN-B	Communes of Cornereva and Mehadia	(1,545.10)
2.295	Iardașița PN-B	Commune of Mehadia	(501.60)
2.296	Belareca PN-B	Communes of Cornereva and Mehadia	(1,665.70)
2.297	The Bârzoni Cave PN-B	Commune of Cornereva	(0.10)
2.298	Valea Mare PN-D	The town of Moldova Nouă	(1,179.00)
2.299	The Nera Pond - Danube PN-D	Commune of Socol	(10.00)
2.300	The hay field with daffodils of Zervești	Commune of Turnu Ruieni	40.00
2.301	The Soceni Fossiliferous place	Commune of Ezeriș	0.40
2.302	The Globului Quays	Commune of Iablanița	225.00
2.303	The Rudăriei Quays	Commune of Eftimie Murgu	250.00
2.304	'Cuptor'-Brădișoru de Jos	The town of Oravița	0.50
2.305	'The Banat Sphinx'	Commune of Topleț	0.50
2.306	'The Black ravene'	Commune of Mehadia	5.00
2.307	The ravine of Valea Dividici	Commune of Pojejena	5.00
2.308	The Petrolea Hill-Cuptoare	Commune of Cornea	5.00
2.309	The Greatța Valley	Commune of Mehadia	9.00
2.310	The Crouri Ravine	Commune of Iablanița	7.00
2.311	Ogașul Slătinic	Commune of Bozovici	1.00
2.312	Baziaș	Commune of Socol	170.90
2.313	The Ezerișel forest	Commune of Ezeriș	120.00
2.314	The fossiliferous place of Apadia	Commune of Brebu	1.00
2.315	The fossiliferous place of Delinești	Commune of Păltiniș	4.00
2.316	The fossiliferous place of Ezeriș	Commune of Ezeriș	2.00
2.317	The fossiliferous place of Globu Craiovei	Commune of Iablanița	2.00
2.318	The fossiliferous place of Petroșnița	Commune of Buceșnița	3.00
2.319	The fossiliferous place of Târnova	Commune of Târnova	2.00
2.320	The fossiliferous place of Tirol	Commune of Doclin	0.50
2.321	The fossiliferous place of Valea Pai	Commune of Ramna	2.00
2.322	The fossiliferous place of Zorlențu Mare	Commune of Zorlențu Mare	3.00
County of Călărași			
2.323	The Ciornuleasa forest	Commune of Mitreni	75.20
County of Cluj			
2.324	The Corabia Quarry	Commune of Gilău, village of Someșul Rece	2.00
2.325	The Vârfurașu Cave	Commune of Mărgău	1.00
2.326	The Suatu hay fields (I and II)	Commune of Suatu	9.20
2.327	The Clujului Hayfields - Copârșaie	City Cluj-Napoca	1.50
2.328	The Clujului Hayfields - Valea lui Craiu	City Cluj-Napoca	1.00

0	1	2	3
2.329	The Morilor Valley	Commune of Feleacu	1.00
2.330	The Dumbrava Creek	Commune of Ciurila	0.50
2.331	The Turzii Quays	Commune of Mihai Viteazu	104.00
2.332	Lacul Știucilor	Commune of Fizeșu Gherlii	26.00
2.333	The Legiilor Valley	Commune of Geaca	13.50
2.334	The reed fields of Sic	Commune of Sic	2.00
2.335	Făgetul Clujului	City of Cluj-Napoca	10.00
2.336	Peștera Mare (on the Firei Valley) PN-F	Commune of Mărgău	(2.00)
2.337	The cave of Piatra Ponorului PN-F	Commune of Mărgău	(2.00)
2.338	The gypsums of Leghia	Commune of Aghireșu	1.00
2.339	The fossiliferous place of Coruș	Commune of Baciu	2.00
2.340	Molhașul Mare from Izbuca	Commune of Beliș	8.00
2.341	The Baciului Quays	Commune of Baciu	3.00
2.342	The Turenilor Quays	Commune of Tureni	25.00
2.343	The old salt quarry	City of Turda	10.00
2.344	The Munții Apuseni Park PN-F	Commune of Beliș	(6,200.00)
County of Constanța			
2.345	Vama Veche - 2 Mai (The marine coastal aquarium)	Commune of Limanu, village of Vama Veche	5,000.00
2.346	The Chituc sand bank DD-A	Commune of Corbu	(2,300.00)
2.347	Lupilor sand bank DD-A	Commune of Mihai Viteazu	(2,075.00)
2.348	Corbu-Nunțași - Histria DD-A	Communes of Istria and Corbu	(1,610.00)
2.349	The Histria Fortress DD-A	Commune of Istria	(350.00)
2.350	The lime walls of Petroșani	Commune of Deleni	4.80
2.351	The Aliman fossiliferous place	Commune of Aliman	15.00
2.352	The Neojurassic reef of Topalu	Commune of Topalu	8.00
2.353	The Credința fossilifer place	Commune of Cobadin	6.00
2.354	The Cernavodă fossiliferous place	The town of Cernavodă	3.00
2.355	The Seimenii Mari fossiliferous place	Commune of Seimeni	0.50
2.356	The La Adam cave	Commune of Târgușor	5.00
2.357	The Gura Dobrogei cave	Commune of Târgușor	5.00
2.358	The Limanu Cave	Commune of Limanu	1.00
2.359	Valu lui Traian	Commune of Valu lui Traian	5.00
2.360	The Hagieni Forest	Commune of Albești	392.90
2.361	The Dumbrăveni Forest	Commune of Dumbrăveni	345.70
2.362	The Jurassic reeves Cheia	Commune of Târgușor	170.00
2.363	The Canaraua Fetii Forest	Commune of Băneasa	168.30
2.364	Fântânița - Murfatlar	The town of Basarabi	66.40
2.365	The Esecchioi Forest	Commune of Ostrov	26.00
2.366	The Marin Dunes of Agigea	The city of Constanța	25.00
2.367	The Alah Bair Hill	Commune of Crucea	10.00
2.368	The Agigea Lake	The City of Constanța, Commune of Agigea	86.80

0	1	2	3
2.369	Hârșova Harbour Canarale	The town of Hârșova	5.30
2.370	The Movila Banului fossiliferous place	The city of Mangalia	4.00
2.371	The Obanul Mare and the Movile Caves	The city of Mangalia	12.00
County of Covasna			
2.372	The Birch forest of Reci	Commune of Reci	48.20
County of Dâmbovița			
2.373	The Cocora Cave (including the Urșilor Quays)	Commune of Moroeni	(307.00)
2.374	The Tâtarului Quays	Commune of Moroeni	(144.30)
2.375	The Horoabei Valley	Commune of Moroeni	(5.70)
2.376	Orzea-Zănoaga	Commune of Moroeni	(841.20)
2.377	Zănoaga-Lucăcilă	Commune of Moroeni	259.40
2.378	The Plaiul Domnesc Reserve	Commune of Moroeni	0.50
2.379	The Răteiului Cave	Commune of Moroeni	1.50
2.380	The Lăptici Moor	Commune of Moroeni	14.90
2.381	The Crucii Glade	Commune of Moroeni	0.50
2.382	The Plaiul Hoșilor Reserve	Commune of Moroeni	0.50
2.383	The Spring of Corbii Ciungi	Commune of Corbii Mari	5.00
County of Dolj			
2.384	The Bujorului Glade in Plenița Forest	Commune of Plenița	50.00
2.385	Valea Rea – Radovan	The town of Șegarcea and Commune of Radovan	20.00
2.386	The Dăbuleni Dunes ('La Cetate')	Commune of Dăbuleni	8.00
2.387	The Gighera Meadow	Commune of Gighera	4.00
2.388	The Cetate Meadow (in the Danube river meadow)	Commune of Cetate	6.00
2.389	The Gogoșu-Ștefănel meadow	Commune of Gogoșu	10.00
2.390	The Bucovăț fossiliferous place	Commune of Bucovăț	4.00
2.391	The Drănic fossiliferous place	Commune of Drănic	6.00
2.392	Ciuperceni - Desa	Commune of Ciupercenii Noi	200.00
2.393	The Adunații de Geormana Lake	Commune of Bratovoști	102.00
2.394	The water compound Preajba-Făcăi	The city of Craiova, town of Făcăi and Commune of Malu Mare, village of Preajba	28.00
2.395	The Cilieni-Băilești Pond	The town of Băilești	47.00
2.396	The Ionele Lake	Commune of Desa	3.20
2.397	Balta Neagră	Commune of Desa	1.20
2.398	Balta Lată	Commune of Ciupercenii Noi	28.00
2.399	The rivers of Desnățui and Terpezița, upstream Fântânele	Commune of Teslui, village of Fântânele	80.00

0	1	2	3
2.400	The Bălășan river upstream Băilești	Commune of Teslui, village of Fântânele	36.00
2.401	The Caraula Lake	Commune of Caraula	28.00
County of Galați			
2.402	The sand dunes of Hanu Conachi	Commune of Fundeni, village of Hanu Conachi	199.30
2.403	The Gârboavele Forest	The city of Galați	230.00
2.404	The Breana-Roșcani Forest	Commune of Băneasa	78.30
2.405	The fossiliferous place of Tirighina-Barboși	The city of Galați	1.00
2.406	The fossilifer place of Ratesș	The city of Tecuci	1.50
2.407	The Fundeanu Forest	Commune of Drăgușeni	53.20
2.408	The Talasmani Forest	The town of Berești	20.00
2.409	The Buciumeni Forest	Communes of Buciumeni and Brăhășești	71.20
2.410	The Prut Eyot	The city Galați	62.00
2.411	The Potcoava Pond	Commune of Branișteana	49.00
2.412	The Talabasca Pond	Commune of Tudor Vladimirescu	139.00
2.413	The Berești fossiliferous place	The town of Berești	49.00
2.414	The lower meadow of the Prut river	Commune of Cavadinești	81.00
2.415	The Pochina Lake	Commune of Suceveni	74.80
2.416	The Vlăscuța Lake	Commune of Măstăcani	41.80
2.417	The Pogănești Forest	Commune of Băneasa	33.50
County of Giurgiu			
2.418	The Oloaga-Grădinari Forest	Commune of Comana	248.00
2.419	The Padina Tătarului Forest	Commune of Comana	230.00
2.420	The Manafu Forest	The town of Ghimpați	28.00
2.421	The Teșila Reserve	Commune of Schitu, village of Vlașin	52.50
County of Gorj			
2.422	Piatra Cloșanilor (including the caves of Cloșani and Cioaca cu Brebenei) PN-B	Commune of Padeș, village of Cloșani	(1,730.00)
2.423	Ciucevele Cernei PN-B	Commune of Padeș, village of Cerna-Sat	(1,166.00)
2.424	The Muierii Cave	Commune of Baia de Fier	19.00
2.425	The Martel Cave PN-B	Commune of Padeș	(2,00)
2.426	The Corcoaiei Quays PN-B	Commune of Padeș, village of Cerna-Sat	(34.00)
2.427	The Lainicilor Sphinx	The town of Bumbăști-Jiu	1.00
2.428	The Buha Stone	Commune of Săcelu	1.00
2.429	The Andreaua Stone	Commune of Tismana, village of Sohodol	1.00
2.430	The Biserica Dracilor Stone	Commune of Săcelu, village of Blahnița de Sus	1.00
2.431	The springs of Izvernei	Commune of Tismana	500.00
2.432	Jaleșului Creek	Commune of Runcu	20.00
2.433	The Gura Plaiului Cave	Commune of Tismana	10.00
2.434	The Lazului Cave	Commune of Padeș	2.00
2.435	The Iedului Cave	Commune of Baia de Fier	1.00

0	1	2	3
2.436	Cotul cu Aluni	Commune of Tismana	25.00
2.437	The Cioclovina Botanic Reserve	Commune of Tismana	12.00
2.438	The Tismana-Pocruia Forest	Commune of Tismana	51.60
2.439	The Gorganu Forest	Commune of Padeș, village of Motru Sec	21.30
2.440	The Polovragi Forest	Commune of Polovragi	10.00
2.441	The eocenic formations of Săcelu	Commune of Săcelu	1.00
2.442	The Sohodolului Quays	Commune of Runcu	350.00
2.443	The Oslea Mountain	Communes of Padeș and Tismana	280.00
2.444	The Oltețului Quays and the Polovragi Cave	Commune of Polovragi	150.00
2.445	Cornetul Pocruiei	Commune of Tismana	70.00
2.446	The Boroštenilor Stone	Commune of Pestișani	28.00
2.447	The Groșera fossiliferous place	Commune of Aninoasa	1.00
2.448	The Gârbovu fossiliferous place	Commune of Turceni	1.00
2.449	The Buzești fossiliferous place	Commune of Crasna	1.00
2.450	The Săulești fossiliferous place	Commune of Săulești	1.00
2.451	The Valea Desului fossiliferous place	Commune of Vladimir	1.00
2.452	The Sodomului Valley	Commune of Săcelu	1.00
2.453	The Ibanului Valley	Commune of Scoarța, village of Bobu	1.00
2.454	The Barcului Forest	The town of Novaci	25.00
2.455	Stâncile Rafaila	The town of Bumbești-Jiu	1.00
2.456	The Săcelu Mineral Springs	Commune of Săcelu	1.00
2.457	The Gornăcelu Hill	Commune of Schela, village of Gornăcel	1.00
County of Harghita			
2.458	The Praid Salt Mountain	Commune of Praid	60.00
2.459	The Sâncrăieni Geologic Reserve	Commune of Sâncrăieni	10.00
2.460	The Rat Lake	Commune of Mugeni	10.00
2.461	The Melcului Hill (Hirtuș)	Commune of Corund	8.00
2.462	The Mud Volcanoes of Filiaș	The town of Cristuru Secuiesc	1.00
2.463	The Șugău Cave	Commune of Suseni	17.00
2.464	The Licaș ravine PN-I	The town of Gheorgheni, locality of Lacul Roșu	(5.00)
2.465	Tinovul Luci	Commune of Sâncrăieni	273.00
2.466	The După Luncă Marsh	Commune of Voșlăbeni	40.00
2.467	Tinovul de la Plăieșii de Jos	Commune of Plăieșii de Jos	15.00
2.468	The Vlăhița daffodil glade	The town of Vlăhița	20.00
2.469	The Nyeres Piedmont	Commune of Joseni	20.00
2.470	Pietrele Roșii	Commune of Tulgheș	10.00
2.471	Mlaștina cea Mare	Commune of Remetea	4.00
2.472	The Valea de Mijloc Marsh	Commune of Tușnad, village of Tușnadu Nou	4.00
2.473	The Beneș Marsh	Commune of Tușnad, village of Vrabia	4.00
2.474	The Dobreanului creek	Commune of Bilbor	4.00

0	1	2	3
2.475	The Budos Marsh - Sântimbru	Commune of Sâncrăieni	3.00
2.476	The Nadas Marsh	Commune of Tuşnad, village of Tuşnadul Nou	4.00
2.477	The Dumbrava Harghitei Marsh	Commune of Lueta	2.00
2.478	The Borsaros -Sâncrăieni Marsh	Commune of Sâncrăieni	1.00
2.479	Scaunul Rotund	The town of Borsec	40.00
2.480	The reserve of the Iezer Lake in Călimani PN-K	The town of Toplița	(322.00)
2.481	The Borsec Botanic Reserve	The town of Borsec	2.00
2.482	The Biczazului Quays and Lacul Roșu PN-I	The town of Gheorgheni	(2,128.00)
2.483	The Hășmașul Mare Mountain, Piatra Singuratică - Hășmașul Negru PN-I	Commune of Sândominic	(800.00)
2.484	Piatra Șoimilor	The town of Băile Tuşnad - Tuşnad Resort	1.00
2.485	The Vărghișului Quays and the caves in these Quays	Commune of Merești	800.00
2.486	The Sfânta Ana Lake	Commune of Sânmartin, village of Lăzărești	240.00
2.487	Tinovul Mohoș	Commune of Sânmartin, village of Lăzărești	240.00
2.488	The Firtuș Hill	Commune of Corund	40.00
2.489	The Birds' Halting Place in Sânpaul	Commune of Mărtiniș	10.00
2.490	The Nyirkert Marsh	Commune of Tuşnad	4.00
2.491	The thermal waterfall	The town of Toplița	0.50
2.492	The Csemo-Vrabia Marsh	Commune of Tuşnad	5.00
2.493	The Dracului Lake	Commune of Cârța	20.00
County of Hunedoara			
2.494	The Gemenele Scientific Reserve PN-C	Commune of Râu de Mori	(1,629.40)
2.495	The cave with corals PN-C	The town of Uricani, village of Câmpu lui Neag	(0.50)
2.496	The Zeicului Cave PN-C	The town of Uricani, village of Câmpu lui Neag	(1.00)
2.497	The Ponorici-Cioclovina carstic compound PN-N	Commune of Boșorod	(1.50)
2.498	Piatra Crinului	The city of Petroșani	0.50
2.499	The Șura Mare Cave	Commune of Pui	5.00
2.500	The Tecuri Cave	Commune of Baru, village of Baru Mare	2.00
2.501	The Lăpugiu de Sus fossiliferous place	Commune of Lăpugiu de Jos	5.00
2.502	The fossiliferous place with dinosaurs from Sânpetru	Commune of Sântămăria-Orlea, village of Sânpetru	5.00
2.503	The Cizmei Cave	Commune of Bulzești de Sus	1.00
2.504	The Colț Hill and the Zărnoaga Hill	The city of Deva	78.40
2.505	The Pui hay fields	Commune of Pui	13.00

0	1	2	3
2.506	The Nucșoara hay fields with daffodils	Commune of Sălașu de Sus	20.00
2.507	The Peșteanca Marsh	Commune of Densuș, village of Peșteana	2.00
2.508	The limestones of Fața Fetii	Commune of Comuna Râu de Mori	3.00
2.509	The Poieni Peak	Commune of Sălașu de Sus, village of Ohaba de sub Piatră	0.80
2.510	Săcărâmbului Knolls	Commune of Certeju de Sus, village of Săcărâmb	13.00
2.511	The Chizid forest	The city of Hunedoara	50.00
2.512	The Bejan forest	The city of Deva	70.00
2.513	The Ohaba-Ponor fossiliferous place	Commune of Pui, villages of Ohaba and Ponor	10.00
2.514	The Vulcan Mountain	Commune of Buceș	5.00
2.515	The Grohot Natural Bridge	Commune of Bulzeștii de Sus, village of Grohot	1.00
2.516	The Slivuț forest	The town of Hațeg	40.00
2.517	The limestones of the Măgura Hill	Commune of Băita, village of Crăciunești	120.00
2.518	The Cetății Deva Hill	The city of Deva	30.00
2.519	The Uroiului Knoll	The town of Simeria	10.00
2.520	The tufaceous limestone of Bobâlna Valley	Commune of Rapoltu Mare	12.00
2.521	The Madei Quays	Commune of Balșa, village of Mada	10.00
2.522	The Crivadieii Quays	Commune of Bănița, village of Crivadia	10.00
2.523	The Hill and Cave of Bolii	Commune of Bănița	10.00
2.524	The Simeria Stand	The town of Simeria	70.00
2.525	Centennial forest in Dobrișoarei and Prisloapei Valleys	Commune of Bătrâna	139.30
2.526	The Pojoga Forest	Commune of Zam, village of Pojoga	20.00
2.527	The limestones in Godinești	Commune of Zam, village of Godinești	6.00
2.528	The Jiețului Quays	The town of Petrila	10.00
2.529	The Ribicioarei and Uibăreștilor Quays	Commune of Ribița	20.00
2.530	The Cernei Quays	Commune of Lunca Cernii de Jos	2.00
2.531	The Taia Quays	The town of Petrila	2.00
2.532	The Geoagiu-Băi Resort Mezoathermal Waters	Commune of Geoagiu	8.00
2.533	The Boholț reserve	Commune of Șoimuș, village of Boholț	1.00
2.534	The limestones of Boiu de Sus	Commune of Gurasada	50.00
2.535	Țuștea Reptilia Paleofauna	Commune of Unirea, village of Țuștea	0.50
County of Iași			
2.536	The century-old hay fields of Valea lui David	Commune of Letcani	46.36
2.537	The Humosu century-old beech forest	Commune of Sirețel	73.30
2.538	The Uricani Forest	Commune of Miroslava, village of Uricani	68.00
2.539	The Roșcani Forest	Commune of Trifești	34.60
2.540	The Cătălina-Cotnari Forest	Commune of Cotnari	7.60
2.541	The fossiliferous place of Repedea Hill	Commune of Bârnova	5.80

0	1	2	3
2.542	Bohotin - Pietrosu	Commune of Răducăneni, village of Bohotin	0.91
2.543	Poiana cu Schit	Commune of Grajduri	9.50
2.54	Poieni - Cărbunăriei	Commune of Schitu Duca	9.20
2.545	The Frumușica Forest	Commune of Mădărjac	97.30
2.546	The Tătăruși Forest	Commune of Tătăruși	49.90
2.547	Pietrosu	Commune of Dobrovăț	83.00
2.548	The Icușeni Forest	Commune of Victoria	11.60
2.549	The Mircești River Meadow (Vasile Alecsandri)	Commune of Mircești	26.30
2.550	The Băiceni fossiliferous point	Commune of Cucuteni, village of Băiceni	3.23
2.551	The Salinas of Valea Ilenei	Commune of Dumești	5.90
2.552	Prutețul Bălălău	Commune of Probota	24.89
2.553	The Teriva Vișina Pond	Commune of Popricani	6.90
2.554	The Bran bend on the Prut River	Commune of Golăiești, village of Bran	10.00
2.555	The Sălăgeni bend	Commune of Grozești	5.81
2.556	The Prut River	Communes of Bivolari, Trifești, Golăiești, Probota, Țuțora, Prisăcani, Gorban	4,316.00
2.557	The Chirița storage lake	Commune of Holboca	78.00
2.558	The Pârcovaci storage lake	The town of Hârlău	50.00
2.559	The Dancu-Iași Forest	Commune of Holboca	10.80
County of Ilfov			
2.560	The Snagov Lake	Commune of Snagov	100.00
2.561	The Snagov Forest	Commune of Snagov	10.00
County of Maramureș			
2.562	The Bătrâna Spring PN-G	Commune of Moisei	(0.50)
2.563	The Pietrosul Mare PN-G	The town of Borșa	(3,300.00)
2.564	The Albastru Lake	The town of Baia Sprie	0.50
2.565	The Chiuzbaia fossiliferous Reserve	The town of Baia Sprie, locality of Chiuzbaia	50.00
2.566	The Vălenii Șomcuței Cave	Commune of Șomcuța Mare	5.00
2.567	Peștera cu Oase	Commune of Băiuț	0.50
2.568	The Morărenilor Lake	Commune of Ocna Șugatag, village of Breb	20.00
2.569	Stâncăriile Sălhoi - Zâmbroslavele	The town of Borșa	5.00
2.570	The Poiana Brazilor Marsh	Commune of Săpânța	3.00
2.571	The Vlăschișescu Marshes	The city of Baia Mare	3.00
2.572	Tăul lui Dumitru	The city of Baia Mare, village of Firiza	3.00
2.573	The Ronișoara Forest	Commune of Rona de Sus	62.00
2.574	The Crăiasa forest	Commune of Ocna Șugatag	44.00
2.575	The Bavna Forest	Commune of Satulung, village of Fersig and Commune of Mireșu Mare	26.00
2.576	The Costui forest	Commune of Rona de Sus	0.70
2.577	Creasta Cocoșului	Commune of Desești, village of Mara	50.00
2.578	The Tătarului Quays	Commune of Desești, village of Mara	15.00
2.579	The Babei Quays	Commune of Coroieni, village of Beba	15.00
2.580	Cornu Nedeei - Ciungii Bălășinii	The town of Borșa	800.00

0	1	2	3
2.581	The edible chestnut stand in Baia Mare	The city of Baia Mare	500.00
2.582	Cave and Izvorul Albastru Spring of Iza	Commune of Săcel	100.00
2.583	The Lăpuşului Quays (betwen Groapele and Împreunători)	The town of Târgu Lăpuş	25.00 km
2.584	The Comja pine forest	The town of Seini	0.50
2.585	Arcer - Țibleş Bran	Commune of Suciul de Sus, village of Groşii Țibleşului	150.00
2.586	The Fărcău Peak - the Vinderelu Lake - The Mihăilescu Peak	Commune of Repedea	100.00
2.587	The Boiu Mare Cave	Commune of Boiu Mare	0.50
2.588	The Tomnatec - Schleanu daffodill glade	Commune of Repedea	100.00
2.589	Piatra Rea	The town of Borşa	50.00
2.590	The Iezerul Mare Marsh	Commune of Deseşti	5.00
2.591	The Columns of Limpedea	The city of Baia Mare	3.00
2.592	The rosette of stone of Ilba	Commune of Ciocârlău, village of Ilba	0.50
2.593	The Solovan Hill	The city of Sighetu Marmăţiei	1.02
2.594	The Tăul Negru Marsh	Commune of Băiuţ, village of Strâmbu-Băiuţ	1.00
County of Mehedinţi			
2.595	The Epuran Cave	Commune of Cireşu, village of Jupâneşti	1.00
2.596	The spring and stones of Cămana	Commune of Podeni	25.00
2.597	Gura Văii - Vârciorova PN-D	The city of Drobeta-Turnu Severin, locality of Gura Văii	(305.00)
2.598	The Oglănicului Valley	Commune of Brezniţa-Ocol	150
2.599	The Vâjului River Meadow	The town of Vâjnu-Mare	14.00
2.600	The Ponoarele Lilac Forest	Commune of Ponoarele	20.00
2.601	Mediterranean bushes of Isverna	Commune of Isverna	10.00
2.602	Vârful lui Stan PN-B	Commune of Isverna	(120.00)
2.603	The Țesna Valley PN-B	Commune of Balta	(160.00)
2.604	The Borovăţ Forest	Commune of Bălvăneşti	30.00
2.605	The Bunget Forest	Commune of Burila Mare	18.20
2.606	The Drăghiceanu Forest	Commune of Obârşia-Cloşani	60.00
2.607	The Duhovnei Hill	Commune of Iloviţa	50.00
2.608	The Vărănic Hill	Commune of Brezniţa-Ocol	350.00
2.609	Cazanele Mari and Cazanele Mici PN-D	Commune of Dubova	(215.00)
2.610	The Şviniţa fossiliferous place PN-D	Commune of Şviniţa	(95.00)
2.611	The Bahna fossiliferous place PN-D	Commune of Iloviţa	(10.00)
2.612	The Stărmina Forest	Commune of Hinova	100.30
2.613	The Karst compound of Ponoarele	Commune of Ponoarele	100.00
2.614	The limestone walls of Izvoarele Coşuştei	Commune of Balta	60.00
2.615	The Coşuştei Quays	Commune of Balta	50.00

0	1	2	3
2.616	Cornetul Babelor și Cerboanei	Commune of Balta	40.00
2.617	Cornetul Piatra Încălecată	Commune of Isverna	12.00
2.618	The Topolniței Quays and the Topolniței Cave	Commune of Cireșu	60.00
2.619	Cornetul Bălții	Commune of Balta	30.00
2.620	Cornetul Văii și Valea Mănăstirii	The town of Baia de Aramă	40.00
2.621	The Malovăț fossiliferous place	Commune of Malovăț	6.00
2.622	Cracul Grăioara PN-D	The city of Drobeta-Turnu Severin, locality of Gura Văii	(5.00)
2.623	The mediteranean bushes of Cornetul Obârșia-Cloșani	Commune of Obârșia-Cloșani	60.00
2.624	Cracul Crucii PN-D	The city of Drobeta-Turnu Severin, locality of Gura Văii	(2.00)
2.625	Fața Virului PN-D	The city of Drobeta-Turnu Severin, locality of Vârciorova	(6.00)
2.626	The fossiliferous place of Pietrele Roșii	Commune of Husnicioara	1.00
County of Mureș			
2.627	The Zău de Câmpie Peony Reserve	Commune of Zău de Câmpie	3.10
2.628	The Mociar Forest	Commune of Solovătru	48.00
2.629	The Sabet Forest	Commune of Ceuășu de Câmpie	59.00
2.630	The tulip reserve at Vălenii de Mureș	Commune of Brâncovenești	2.50
2.631	The Fărăgău lake	Commune of Fărăgău	35.00
2.632	The oak reserve	The city of Sighișoara	11.90
2.633	The resonance pine spruces of the Lăpușna forest	Commune of Gurghiu	77.80
2.634	The <i>Chamaecyparis lawsoniana</i> stand	Commune of Sângeorgiu de Pădure	5.80
2.635	The century-old oak forest of Breite	The city of Sighișoara	70.00
2.636	The Ursu Lake and the stands on salinas	Commune of Sovata	79.00
2.637	The Gurghiu daffodil glade	Commune of Gurghiu	3.00
2.638	The Deda-Toplița rift	Communes of Deda and Stânceni	6,000.00
2.639	The Mureșului rift	Communes of Lunca Bradului and Răstolnița	7,733.00
2.640	The century-old oak forest of Sângeorgiu de Mureș	Commune of Sângeorgiu de Mureș	0.10
County of Neamț			
2.641	Polița cu Crini PN-J	Commune of Ceahlău	(370.00)
2.642	The Duruitoarea waterfall PN-J	Commune of Ceahlău	(1.00)
2.643	The Bicazului Quays PN-I	Commune of Bicaz-Chei	(11,600.00)
2.644	Stâncă Șerbești	Commune of Ștefan cel Mare	5.00
2.645	The Dobreni Forest Reserve	Commune of Dobreni	37.00

0	1	2	3
2.646	Piatra Teiului	Commune of Poiana Teiului	0.20
2.647	The Toșorog Cave	Commune of Bicazul Ardelean	0.10
2.648	The Munticelu Cave	Commune of Bicazul Ardelean	1.00
2.649	The Vulpîi Hill - Botoaia (Ochiul de Stepă)	The city of Piatra-Neamț	2.00
2.650	The Goșman Forest	Commune of Tarcău	175.00
2.651	The Cozla fossiliferous place	The city of Piatra-Neamț	10.00
2.652	The Șugăului Quays	Commune of Bicaz-Chei	90.00
2.653	The Cernegura fossiliferous place	The city of Piatra-Neamț	198.00
2.654	The Pietricica fossiliferous place	The city of Piatra-Neamț	39.50
2.655	The Agircia fossiliferous place	The city of Piatra-Neamț	1.00
2.656	Codrii de Aramă	Commune of Agapia	7.00
2.657	Codrii de Argint	Commune of Agapia	2.00
2.658	The Aurochs Reserve - Neamț	Commune of Vânători-Neamț	11,500.00
2.659	The Pângărați forest reserve	Commune of Pângărați	2.00
2.660	The Borcuța stream	Commune of Borca	1.20
2.661	The Izvorul Muntelui Lake	The town of Bicaz	150.00
2.662	The Brateș Fauna Reserve	Commune of Tarcău	30.70
2.663	The Borca Fauna Reserve	Commune of Borca	357.00
County of Olt			
2.664	The Seaca Optășani Forest	Commune of Spineni, village of Optășani	135.00
2.665	The Braniștea Catârilor Forest	Communes of Obârșia and Ștefan cel Mare	301.30
2.666	The Călugărească Forest	Commune of Radomirești, village of Crăciunel	40.00
2.667	The Forest House of the Potelu Forest	Commune of Ianca	1.50
2.668	The Peony Reserve of the Romanian Academy of Sciences	Commune of Stoicânești	54.90
2.669	Shrub reserve	Commune of Poboru	121.00
County of Prahova			
2.670	The Slănic Prahova Salt Mountain	The town of Slănic	2.00
2.671	The Plaiul Hoților fossiliferous place	The town of Sinaia	6.00
2.672	The Prahovean Mountainside of Bucegi PN-H	The towns of Bușteni and Sinaia	(3,478.00)
2.673	The Colții lui Barbeș Mountains PN-H	The town of Sinaia	(1,513.00)
2.674	Tigăile din Ciucaș	Commune of Măneciu, village of Cheia	3.00
2.675	The Alder forest of Sinaia-Cumpătul	The town of Sinaia	32.10
County of Satu Mare			
2.676	The Urziceni Forest	Commune of Urziceni	38.00

0	1	2	3
2.677	The Foieni sand dunes	Commune of Foieni	10.00
2.678	Târnoavele din Munții Oaş	Commune of Cămârzana	1.00
2.679	The Vermeş Marsh	Commune of Sanislău	10.00
2.680	The Tur lower river	Commune of Călineşti-Oaş	43.00 km
2.681	The Runc forest	Commune of Pomi, village of Borleşti	68.50
County of Sălaj			
2.682	The Dragons' Garden	Commune of Bălan, village of Gâlgău Almaşului	3.00
2.683	Moşu and Baba Stones	Commune of Napradea, village of Someş Guruslău	0.20
2.684	The daffodil glade of Racâş - Hida	Commune of Hida, village of Râcaş	1.50
2.685	The Limestones of Rona	The town of Jibou, locality of Rona	0.50
2.686	Balta Cehei	The town of Şimleu Silvaniei, locality of Cehei	18.20
2.687	The tulip meadow of Valea Sălajului	The town of Cehu Silvaniei	10.00
2.688	The Stâna Cliţului Landscape reserve	Commune of Băbeni, village of Cliţ	16.00
2.689	Gritstones on Stânca Dracului	Commune of Hida	1.00
2.690	The Tusa - Barcău Landscape Reserve	Commune of Sâg, village of Tusa	15.00
2.691	The Marsh of Iaz	Commune of Plopiş, village of Iaz	10.00
2.692	The 'La castani' Forest	Commune of Ileanda, village of Rogna	7.80
2.693	The Oak forest of Panic	Commune of Hereclean, village of Panic	2.20
2.694	The Panic Marsh oak forest	Commune of Hereclean, village of Panic	1.70
County of Sibiu			
2.695	The bottomless lake Ocna Sibiului	The town of Ocna Sibiului	0.20
2.696	The Eocenic limestones of Turnu Roşu - Porceşti	Commune of Turnu Roşu	60.00
2.697	The limestones of Cisnădioara	The town of Cisnădie, locality of Cisnădioara	1.00
2.698	The Zackel Hill	The city of Sibiu, Commune of Slimnic	11.00
2.699	Suvara Saşilor	The town of Tâlmăciu	20.00
2.700	The Mihăileni Canyon	Commune of Mihăileni	16.00
2.701	The Bâlii Valley	Commune of Cărţişoara	180.00
2.702	The Haşag Mud Volcanoes	Commune of Loamneş, village of Haşag	1.00
2.703	La Grumaji	Commune of Jina	2.00
2.704	Pintenul din Coasta Jinei	Commune of Jina	2.00
2.705	The Cindrelului Mountain Lakes	Commune of Gura Râului	609.60
2.706	The Dumbrava Sibiului Nature Park	The city of Sibiu	993.00
2.707	The Cindrel Natural Park	Commune of Jina	9,873.00
2.708	Masa Jidovului	Commune of Jina	2.00
2.709	Alpine Clearing in the Făgăraş Mountains between Podragu - Suru	Commune of Arpaşu de Jos and the town of Avrig	6,989.20

0	1	2	3
County of Suceava			
2.710	The Twelve Apostles PN-K	Commune of Dorna Căndrenilor	(200.00)
2.711	The Bila - Lala Reserve PN - G	Commune of Cărlibaba	(325.10)
2.712	Moara Dracului	The city of Câmpulung Moldovenesc	1.30
2.713	Piatra Țibăului	Commune of Cărlibaba	20.30
2.714	Piatra Buhei	The city of Câmpulung Moldovenesc	2.00
2.715	Tinovul Poiana Stampei	Commune of Poiana Stampei	681.80
2.716	The Todirescu mountain hay fields	The city of Câmpulung Moldovenesc	44.30
2.717	Tinovul Șarul Dornei	Commune of Șarul Dornei	36.00
2.718	The century-old hay fields of Ponoare	Commune of Bosanci	24.50
2.719	The century-old hay fields of Frumoasa	Commune of Moara	9.50
2.720	Tinovul Găina - Lucina	Commune of Moldova-Sulița	1.00
2.721	The Crujana Forest (Quercetumul)	Commune of Pătrăuți	39.40
2.722	Pietrele Doamnei	The city of Câmpulung Moldovenesc	253.00
2.723	The Slătioara century-old forest	Commune of Stulpicani, village of Slătioara	1,064.20
2.724	The Giupalău century-old forest	Commune of Pojorâta	309.50
2.725	Răchitișul Mare	Commune of Moldova-Sulița	116.40
2.726	The Dragomirna Beech forest	Commune of Mitocul Dragomirnei	134.80
2.727	The forest of Zamostea- Luncă	Commune of Zamostea	107.60
2.728	The Zugrenilor Quays	The town of Vatra Dornei	150.10
2.729	The Lucavei Quays	Commune of Moldova-Sulița	24.30
2.730	Juniper forest with <i>Pinus cembra</i> - Călimani PN-K	The town of Vatra Dornei	(384.20)
2.731	Piatra Pinului and Piatra Șoimului	The town of Gura Humorului	0.50
2.732	Triassic limestones at Pârâul Cailor	Commune of Breaza	0.10
2.733	The strata with <i>Aptychus</i> from Pojorâta	Commune of Fundu Moldovei	1.00
2.734	The century-old hay fields of Calafindești	Commune of Calafindești	17.30
County of Timiș			
2.735	The Cenad Forest	Commune of Cenad	279.20
2.736	The Pogănișului river meadow	Commune of Tormac and Sacoșu Turcesc	75.50
2.737	The Sisitak hillock	Commune of Sânpetru Mare	0.50
2.738	The Bazoș Stand	Commune of Remetea Mare	60.00
2.739	The fossilifer place of Rădmănești	Commune of Bara	4.00
2.740	The Satchinez marshes	Commune of Satchinez	236.00
2.741	The Bistra Forest	Commune of Ghiroda	19.90
2.742	Beba Veche	Commune of Beba Veche, village of Pordeanu	2,187.00
2.743	The Murani marshes	Commune of Pișchia, village of Murani	200.00
2.744	Insula Mare Cenad	Commune of Cenad	3.00

0	1	2	3
2.745	The Igriş Isle	Commune of Sânpetru Mare	3.00
2.746	The Dinaş Salinas	Commune of Peciu Nou	4.00
2.747	The daffodil glade of Bateşti	The town of Făget	20.00
2.748	The Surduc Lake	Commune of Fârdea	362.00
County of Tulcea			
2.749	The Murighiol salinas DD-A	Commune of Murighiol	(87.00)
2.750	Roşca-Suhaiova DD-A	Commune of Chilia Veche	(9,625.00)
2.751	The Letea Forest DD-A	Commune of C. A. Rosetti	(2,825.00)
2.752	The sand bank and lake of Răducu DD-A	Commune of C. A. Rosetti	(2,500.00)
2.753	The Nebunu lake DD-A	Commune of Pardina	(115.00)
2.754	The Vătafu-Lunguleţ Compound DD-A	The town of Sulina	(1,625.00)
2.755	The Caraorman Forest DD-A	Commune of Crişan	(2,250.00)
2.756	The Erenciuc Alder Forest DD-A	Commune of Sfântu Gheorghe	(50.00)
2.757	The Popina Isle DD-A	Commune of Sarichiol	(98.00)
2.758	The Sacalin Zătoane Compound DD-A	Commune of Sfântu Gheorghe	(21,410.00)
2.759	The Periteasca-Leahova Compound DD-A	Commune of Jurilovca and Murighiol	(4,125.00)
2.760	The Doloşman Cape DD-A	Commune of Jurilovca	(125.00)
2.761	The Potcoava Lake DD-A	Commune of Sfântu gheorghe	(652.00)
2.762	The Belciug lake DD-A	Commune of Sfântu Gheorghie	(110.00)
2.763	The Rotundu lake DD-A	The town of Isaccea	(228.00)
2.764	Valea Fagilor Forest PN-P	Commune of Luncaviţa	(154.00)
2.765	The Dealul Bujorului Nature Reserve	The town of Babadag	50.80
2.766	The Valea Oilor Lilac Reserve	The town of Babadag	0.35
2.767	The Fântâna Mare Lilac Reserve	Commune of Ciucurova, village of Fântâna Mare	0.30
2.768	The Secarul Peak	Commune of Ciucurova, village of Atmagea	34.50
2.769	The Korum Tarla Botanic Reserve	The town of Babadag	2.00
2.770	The fossiliferous place of Dealul Bujoarele	Commune of Turcoaia	8.00
2.771	The Agighiol Geological Reserve	Commune of Valea Nucarilor, village of Agighiol	9.70
2.772	The Niculiţel forest	Commune of Niculiţel	11.00
County of Vaslui			
2.773	The fossiliferous place of Măluşteni	Commune of Măluşteni	10.00
2.774	The fossiliferous place of Nisipăria Hulubăţ	The city of Vaslui	2.50
2.775	The Burcel's Hillock	Commune of Micleşti	12.00
2.776	Tanacu - Coasta Rupturile	Commune of Tanacu	6.00
2.777	The Bădeana forest	Commune of Tutova	126.70
2.778	The Hârboanca forest	Commune of Ştefan cel Mare	43.10

0	1	2	3
2.779	The Bălteni forest	Commune of Bălteni	22.00
2.780	The hay field of Glodeni	The town of Negrești, village of Glodeni	6.00
County of Vâlcea			
2.781	The pyramids of Stăncioiului Valley	The city of Râmnicu Vâlcea, Commune of Goranu	12.00
2.782	The pyramids of Slătioara	Communes of Slătioara and Stroești	10.50
2.783	The Caprelor Cave	The town of Băile Olănești- Olănești Resort	0.50
2.784	The Piciorul Boului Ravine	Commune of Căineni	0.10
2.785	The Bates Cave	Commune of Costești	1.00
2.786	The Munteanu-Murgoci Cave	The town of Olănești	1.00
2.787	The Pagodelor Cave	The town of Olănești	0.30
2.788	The Rac Cave	The town of Olănești	0.20
2.789	The Valea Bistrița Cave	The town of Olănești	0.25
2.790	The Cave with the lake	The town of Olănești	0.10
2.791	The Cave with pearles	The town of Olănești	0.50
2.792	The Arnăuților Cave	The town of Olănești	0.40
2.793	The Clopot Cave	The town of Olănești	0.10
2.794	The Stricatul Juniper forest	Commune of Voineasa	15.00
2.795	The Mosoroasa Marsh	The town of Olănești	0.25
2.796	The Forest of Tisa Mare	Commune of Lungești	50.00
2.797	The Silea Forest	Commune of Lungești, village of Fumureni	25.00
2.798	The Călinești-Brezoi Forest	The town of Brezoi	200.00
2.799	The Gâlcescu Depression	Commune of Voineasa	200.00
2.800	The Miru-Bora Reserve	Commune of Voineasa	25.00
2.801	The Ocnele Mari Reserve	The town of Ocnele Mari	15.00
2.802	The Rădița-Mânzu Reserve	The town of Olănești	10.00
2.803	The Latorița Mountain Lake	Commune of Mălaia	10.00
2.804	The Stogu Mountain	The town of Olănești	10.00
2.805	The Latorița Forest	Commune of Mălaia	7.10
2.806	The Sterpu-Dealul Negru Reserve	Commune of Voineasa	5.00
2.807	The Cristești Reserve	Commune of Voineasa	3.00
2.808	The Valea Cheii Reserve	The town of Olănești	1.50
2.809	The Golești Paleontologic Reserve	Commune of Golești	10.00
County of Vrancea			
2.810	The Zăbalei - Zârna Mică – Răoaza Depressions	Commune of Năruja	350.00
2.811	Focul Viu de la Andreiașu de Jos	Commune of Andreiașu de Jos	12.00
2.812	The Goru Mountain	Commune of Năruja	388.10
2.813	The Negru lake - The Nărujei I Quays	Commune of Nistorești	20.00
2.814	The Verdele Forest - The Nărujei II Quays	Commune of Nistorești	250.00
2.815	The Cenaru Forest	Commune of Andreiașu de Jos	383.20
2.816	The Lepșa Zboina Forest	Commune of Tulnici, village of Lepșa	210.70

0	1	2	3
2.817	The Schitu-Dălhăuți Forest	Commune of Cârligele	188.20
2.818	The Mișina waterfall	Commune of Nistorești	183.50
2.819	The Pit with Pine Trees	Commune of Tulnici	11.10
2.820	The Reghiu - Scruntaru Forest	Commune of Reghiu	95.70
2.821	Râpa Roșie - Dealu Morii	Commune of Tulnici	49.60
2.822	Strâmtura - Coza	Commune of Tulnici	15.00
2.823	Algheanu Reserve	Commune of Vrâncioaia	10.00
2.824	The Putnei waterfall	Commune of Tulnici, village of Lepșa	10.00
2.825	The Bozu Stream	Commune of Valea Sării, village of Prisaca	5.00
2.826	The Tișiței Valley	Commune of Tulnici	307.00
2.827	The Siretului River Meadow	The city of Focșani	388.40

II. THE GEOGRAPHIC GROUPPING AND TERRITORIAL LOCATION OF THE PROTECTED NATURAL AREAS OF NATIONAL INTEREST

1.0. The Southern Carpathians and Carpathian Hills

1.1. Biosphere reserves and national or natural parks

Symbol	Name	County
G	Rodna	Bistrița-Năsăud, Maramureș, Suceava
H	Bucegi	Argeș, Dâmbovița, Brașov, Prahova
I	The Bicazului - Hășmaș Quays	Neamț, Harghita
J	Ceahlău	Neamț
K	Călimani	Suceava, Mureș, Bistrița-Năsăud

1.2. Areas including nature reserves and monuments

County
Maramureș, Bistrița-Năsăud, Suceava, Mureș, Neamț, Harghita, Bacău, Covasna, Brașov, Vrancea, Buzău, Prahova, Dâmbovița

2.0 The Southern Carpathians and Getic Hills

2.1. Biosphere reserves and national parks

Symbol	Name	County
B	Domogled-The Cernei Valley	Caraș-Severin, Mehedinți, Gorj
C	Retezat	Hunedoara
L	Cozia	Vâlcea
M	Piatra Craiului	Argeș-Brașov
N	Grădiștea Muncelului-Cioclovina	Hunedoara

2.2. Areas including nature reserves and monuments

County
Alba, Argeș, Caraș-Severin, Gorj, Hunedoara, Mehedinți, Sibiu, Timiș, Vâlcea

3.0. The Banatului mountains and hills

3.1. The biosphere reserves and national or natural parks

Symbol	Name	County
D	The Iron Gates	Caraş-Severin, Mehedinţi
E	The Nerei Quays - Beuşniţa	Caraş-Severin
O	Semenic - The Caraşului Quays	Caraş-Severin

3.2. Areas including nature reserves and monuments

County
Caraş-Severin, Mehedinţi

4.0. The Western Carpathians and Crişanei Hills

4.1. Biosphere reserves and national or natural parks

Symbol	Name	County
F	The Western Carpathians	Alba, Arad, Bihor, Cluj

4.2. Areas including nature reserves and monuments

County
Alba, Arad, Bihor, Cluj, Hunedoara, Sălaj

5.0 The Clujului Hills

5.1. Biosphere reserves and national or natural parks – non existent

5.2. Areas including nature reserves and monuments

County
Alba, Cluj, Mureş

6.0 The Someş Plateau

6.1. Biosphere reserves and national or nature parks –non existent

6.2. Areas including nature reserves and monuments

County
Maramureş, Sălaj

7.0 The Suceava Plateau and the Plain of Moldova

7.1. Biosphere reserves and national or natural parks – non existent

7.2. Areas including nature reserves and monuments

County
Botoşani, Iaşi, Suceava

8.0 The Bârlad Plateau

8.1. Biosphere reserves and national or natural parks - not included

8.2. Areas including nature reserves and monuments

County
Iaşi, Galaţi, Neamţ, Vaslui

9.0 The Dobrogea Plateau

9.1. Biosphere reserves and national or natural parks

Symbol	Name	County
P	The Măcinului Mountains	Tulcea

9.2. Areas including nature reserves and monuments

County
Constanța, Tulcea

10.0 The Carei Plain

10.1. Biosphere reserves and national or natural parks - not included

10.2. Areas including nature reserves and monuments

County
Bihor, Satu Mare

11.0 The Mureș and Timiș Plains

11.1. Biosphere reserves and national or natural parks – non existent

11.2. Areas including nature reserves and monuments

County
Arad, Timiș

12.0 The Vlăsia Plain

12.1. Biosphere reserves and national or natural parks - not included

12.2. Areas including nature reserves and monuments

County
Dâmbovița, Giurgiu, Ilfov

13.0 The Danube River Meadow

13.1. Biosphere reserves and national or natural parks

Symbol	Name	County
R	Balta Mică a Brăilei	Brăila

13.2. Areas including nature reserves and monuments

County
Brăila, Călărași, Dolj, Galați, Giurgiu, Ialomița, Mehedinți, Olt, Teleorman

14.0 The Danube Delta

14.1. Biosphere reserves and national or natural parks

Symbol	Name	County
A	The Danube Delta	Constanța, Tulcea

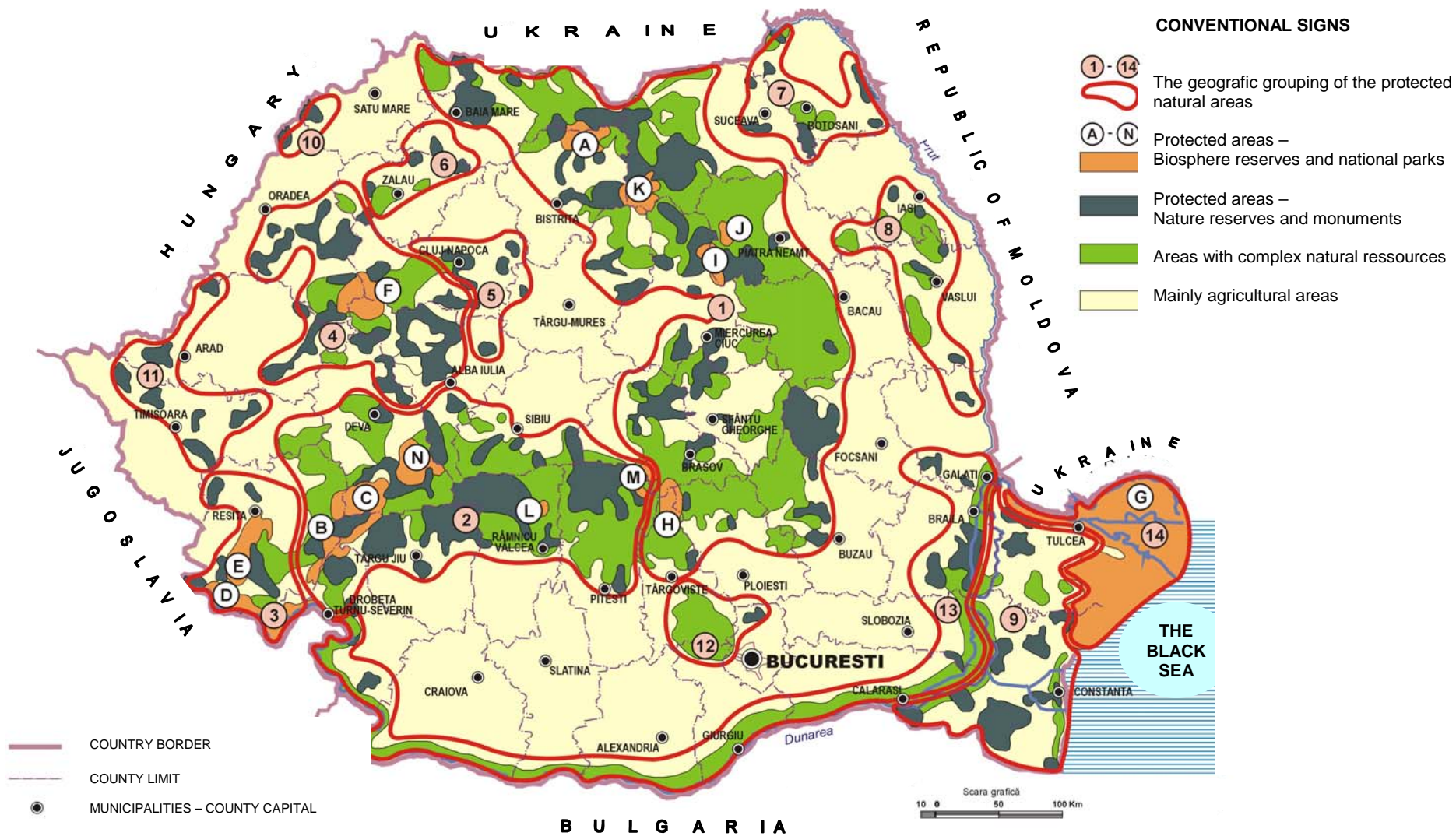
NOTE:

The geographic grouping of the protected nature areas included in this annex can be found in AnnexII.

SPATIAL PLANNING OF THE NATIONAL TERRITORY

SECTION III - PROTECTED AREAS

NATURAL AREAS



**I. CULTURAL HERITAGE VALUES OF NATIONAL INTEREST
(HISTORICAL MONUMENTS OF OUTSTANDING
NATIONAL VALUE)**

1. The monuments and architectural ensembles

a) *Fortresses*

No	Name	Administrative-territorial Unit	County
a)1	Alba Carolina Fortress	City of Alba Iulia	Alba
a)2	Călnic Fortress	Commune of Călnic, village of Călnic	Alba
a)3	Greavilor Fortress	Commune of Gârbova, village of Gârbova	Alba
a)4	Aradului Fortress	City of Arad	Arad
a)5	Șoimoș Fortress	The town of Lipova	Arad
a)6	Poienari Fortress	Commune of Arefu, village of Căpățânenii Ungureni	Argeș
a)7	Oratia Fortress	Commune of Dâmbovicioara, village of Podul Dâmboviței	Argeș
a)8	Biharia Fortress	Commune of Biharia, village of Biharia	Bihor
a)9	The Cheresig Donjon	Commune of Girișu de Criș, village of Cheresig	Bihor
a)10	Oradea Fortress	City of Oradea	Bihor
a)11	Bran Fortress	Commune of Bran, village of Bran	Brașov
a)12	Făgăraș Fortress	City of Făgăraș	Brașov
a)13	Râșnov Fortress	Town of Râșnov	Brașov
a)14	Rupea Fortress	Town of Rupea	Brașov
a)15	Feldioara Fortress	Commune of Feldioara, village of Feldioara	Brașov
a)16	Fortress of Negru Vodă	Commune of Lisa, village of Breaza	Brașov
a)17	Dăbâca Fortress	Commune of Dăbâca, village of Dăbâca	Cluj
a)18	Bologa Fortress	Commune of Poieni, village of Bologa	Cluj
a)19	Balványos Fortress	Commune of Turia, village of Turia	Covasna
a)20	The defence walls of Târgoviște Town	The city of Târgoviște	Dâmbovița
a)21	Giurgiu Fortress	The city of Giurgiu	Giurgiu
a)22	Crivadia Tower	Commune of Bănița, village of Crivadia	Hunedoara
a)23	Deva Fortress	The city of Deva	Hunedoara
a)24	Mălăiești Fortress	Commune of Sălașu de Sus, village of Mălăiești	Hunedoara
a)25	Colți Fortress	Commune of Râu de Mori, village of Suseni	Hunedoara
a)26	Chioarului Fortress	Commune of Remetea Chioarului, village of Berchez	Maramureș
a)27	Severinului Fortress	The city of Drobeta-Turnu Severin	Mehedinți
a)28	The Târgu Mureș Fortress	The city of Târgu Mureș	Mureș
a)29	Saschiz Fortress	Commune of Saschiz, village of Saschiz	Mureș
a)30	Neamțului Fortress	The town of Târgu Neamț	Neamț

No	Name	Administrative-territorial Unit	County
a)31	Turnu Roșu Fortress	The town of Tălmăciu, village of Boița	Sibiu
a)32	Slimnicului Fortress	Commune of Slimnic, village of Slimnic	Sibiu
a)33	Suceava Royal Fortress	The city of Suceava	Suceava
a)34	Turnu Fortress	The city of Turnu Măgurele	Teleorman
a)35	Enisala Fortress	Commune of Sarichioi, village of Enisala	Tulcea

b) Royal court compounds in ruins

No	Name	Administrative-territorial unit	County
b)1	The vestiges of the princely court	City of Curtea de Argeș	Arge
b)2	The ruins of the princely court with the Chindia Tower and the fortified precincts	City of Târgoviște	Dâmbovița
b)3	The vestiges of the princely court	City of Iași	Iași
b)4	The vestiges of the princely court	City of Suceava	Suceava
b)5	The ruins of the princely court Curtea Veche	City of Bucharest	

c) Fortified Churches - Fortresses

No	Name	Administrative-territorial unit	County
c)1	Rural fortress with church	Commune of Hărman, village of Hărman	Brașov
c)2	Rural fortress with church	Commune of Prejmer, village of Prejmer	Brașov
c)3	Rural fortress with church	Commune of Homorod, village of Homorod	Brașov
c)4	Rural fortress with the Evangelic church	Commune of Sânpetru, village of Sânpetru	Brașov
c)5	Rural fortress with the Evangelic church	Commune of Bunești, village of Viscri	Brașov
c)6	Rural fortress with the fortified Evangelic church	Commune of Cața, village of Drăușeni	Brașov
c)7	Rural fortress with the Evangelic church	Commune of Cața, village of Cața	Brașov
c)8	Rural fortress with the Unitarian church	Commune of Dârjiu, village of Dârjiu	Harghita
c)9	Rural fortress with the church	Commune of Vânători, village of Archita	Mureș
c)10	Rural fortress with the Evangelic church	Commune of Ațel, village of Ațel	Sibiu
c)11	Evangelic church with the fortress	Commune of Biertan, village of Biertan	Sibiu
c)12	Church with the precincts	Commune of Biertan, village of Richiș	Sibiu
c)13	Rural fortress with the church	Town of Cisnădie	Sibiu
c)14	Rural fortress with the church	Commune of Merghindeal, village of Dealu Frumos	Sibiu
c)15	The Evangelic church with the fortification	Commune of Laslea, Mălâncrav	Sibiu
c)16	Rural fortress with the church	Commune of Moșna, village of Moșna	Sibiu

No	Name	Administrative-territorial Unit	County
c)17	Rural fortress with the church	Commune of Valea Viilor, village of Valea Viilor	Sibiu
c)18	Rural fortress with the fortified Evangelic church	Commune of Bazna, village of Bazna	Sibiu
c)19	Rural fortress with the Evangelic church	Commune of Brateiu, village of Buzd	Sibiu
c)20	Rural fortress with the Evangelic church	Commune of Dârlos, village of Curciu	Sibiu
c)21	Rural fortress with the Evangelic church	Town of Mediaş, village of Ighişu Nou	Sibiu
c)22	Rural fortress with the Evangelic church	Town of Dumbrăveni, village of Saroş pe Târnav	Sibiu

d) The Castles, mansions, palaces

No	Name	Administrative-territorial unit	County
d)1	The Bethlen-Haller Castle	Commune of Cetatea Alba, village of Cetatea Alba	Alba
d)2	The Bethen Castle	Commune of Şona, village of Sâniclăuş	Alba
d)3	The Macea Castle	Commune of Macea	Arad
d)4	The fortified compound of the Goleştilor mansion	Commune of Bălileşti, village of Goleşti	Argeş
d)5	The Banffy Castle	Commune of Bonţida, village of Bonţida	Cluj
d)6	The Fortress-Castle	Town of Gherla	Cluj
d)7	The Kornis Castle	Commune of Mica, village of Mănăctirea	Cluj
d)8	The ensemble of the Brâncovenesc Palace	Commune of Potlogi, village of Potlogi	Dâmboviţa
d)9	The Coţofenilor Manor	Commune of Almăj, village of Coţofenii din Faţă	Dolj
d)10	The Udrişte Năsturel Stone House	Commune of Hotarele, village of Hereşti	Giurgiu
d)11	The Drugănescu Palace	Commune of Floreşti-Stoeneşti, village of Stoeneşti	Giurgiu
d)12	The Lazăr Palace	Commune of Lăzarea, village of Lăzarea	Harghita
d)13	The Corvinilor Palace	City of Hunedoara	Hunedoara
d)14	The ruins of the Căndeşti Court	Commune of Râu de Mori, village of Râu de Mori	Hunedoara
d)15	The Cantacuzino-Paşcanu Palace	Town of Paşcani	Iaşi
d)16	The Alexandru Ioan Cuza Palace	Commune of Ruginoasa, village of Ruginoasa	Iaşi
d)17	The ensemble including Adormirea Maicii Domnului Church, the Cantacuzino-Deleanu Mansion, the precinct walls	Commune of Deleni, village of Deleni	Iaşi
d)18	The ensemble including the Brâncovenesc Palace and the church	Commune of Mogoşoaia, village of Mogoşoaia	Ilfov
d)19	The Bethlen Palace	Commune of Daneş, village of Criş	Mureş
d)20	The Teleky Palace	Commune of Gorneşti, village of Gorneşti	Mureş
d)21	The ruins of the palace of postelnic (lord) Constantin Cantacuzino	Commune of Filipeştii de Târg, village of Filipeştii de Târg	Prahova

No	Name	Administrative-territorial Unit	County
d)22	The Filipescu Mansion	Commune of Filipeștii de Târg, village of Filipeștii de Târg	Prahova
d)23	The ensemble of the Peleş Castle	Town of Sinaia	Prahova
d)24	The Lonyai Castle	Commune of Medieșu Aurit, village of Medieșu Aurit	Satu Mare
d)25	The Karoly Castle	City of Carei	Satu Mare
d)26	The Bathory Castle	Town of Șimleul Silvaniei	Sălaj
d)27	The Rosetti-Balș Mansion	Commune of Codăești, village of Pribești	Vaslui
d)28	The Rosetti-Solescu Mansion	Commune of Solești, village of Solești	Vaslui

e) Fortified country houses (“cula”)

No	Name	Administrative-territorial unit	County
e)1	The Izvoranu Cula	Commune of Brabova, village of Brabova	Dolj
e)2	The Cernat Cula	Commune of Cernătești, village of Cernătești	Dolj
e)3	The Cornoiu Cula	Town of Bumbești-Jiu, village of Curtișoara	Gorj
e)4	Cartianu House Cula	Commune of Turcinești, village of Cartianu	Gorj
e)5	Glovenilor House Cula	Commune of Glogova, village of Glogova	Gorj
e)6	The Cioabă Cula	Commune of Slivilești, village of Șiacu	Gorj
e)7	The Crășnaru Cula	Commune of Aninoasa, village of Groșerea	Gorj
e)8	Cuțui House Cula	Commune of Broșteni, village of Broșteni	Mehedinți
e)9	The Tudor Vladimirescu Cula	Commune of Șimian, village of Cerneți	Mehedinți
e)10	The Duca Cula	Commune of Măldărești, village of Măldărești	Vâlcea
e)11	The Greceanu Cula	Commune of Măldărești, village of Măldărești	Vâlcea

f) Civil urban buildings

No	Name	Administrative-territorial units	County
f)1	The princely Palace	City of Alba Iulia	Alba
f)2	The baroque Palace	City of Oradea	Bihor
f)3	The Town Hall	City of Oradea	Bihor
f)4	The 'Șirul canonicilor' compound	City of Oradea	Bihor
f)5	The Ioan Zidarul House	City of Bistrița-Năsăud	Bistrița-Năsăud
f)6	The Argintarului House	City of Bistrița-Năsăud	Bistrița-Năsăud
f)7	Șirul Șugălete	City of Bistrița-Năsăud	Bistrița-Năsăud
f)8	The Sofian Establishments	City of Botoșani	Botoșani
f)9	Casa Sfatului	City of Brașov	Brașov
f)10	The Hirsher House	City of Brașov	Brașov
f)11	The Romanian School of Schei	City of Brașov	Brașov
f)12	The 'Aro' Hotel	City of Brașov	Brașov
f)13	The Old Theatre	Town of Oravița	Caraș-Severin

No	Name	Administrative-territorial Unit	County
f)14	The Matei Corvin House	Cluj-Napoca City	Cluj
f)15	The Banffy Palace	Cluj-Napoca City	Cluj
f)16	The National Theatre	Cluj-Napoca City	Cluj
f)17	The Toldalagy-Korda Palace	Cluj-Napoca City	Cluj
f)18	The Bathory House	Turda City	Cluj
f)19	The 'Rex' Hotel	Constanța City-Mamaia	Constanța
f)20	The Glovenilor House	Craiova City	Dolj
f)21	Casa Băniei	Craiova City	Dolj
f)22	The Prefecture Hall	Craiova City	Dolj
f)23	The Mihail Palace	Craiova City	Dolj
f)24	The Administrativ Palace	Galați City	Galați
f)25	The Palace of Justice	Galați City	Galați
f)26	Magna Curia	Deva City	Hunedoara
f)27	The Dosoftei House	Iași City	Iași
f)28	The Bașotă House	Iași City	Iași
f)29	The Balș House	Iași City	Iași
f)30	The Rosetti-Roznoveanu Palace	Iași City	Iași
f)31	The palace of Prince Alexandru Ioan Cuza	Iași City	Iași
f)32	The National Theatre	Iași City	Iași
f)33	The Palace of Culture	Iași City	Iași
f)34	The Vlad Dracul House	Sighișoara City	Mureș
f)35	The House with a stag	Sighișoara City	Mureș
f)36	The National Theatre	Caracal City	Olt
f)37	The Hagi Prodan House	Ploiești City	Prahova
f)38	The Central Market	Ploiești City	Prahova
f)39	The Nicolae Iorga House	Town of Vălenii de Munte	Prahova
f)40	Turnul Sfatului	Sibiu City	Sibiu
f)41	The ensemble of the old Town Hall including the Thomas Altenberger House, the Johann Lula House	Sibiu City	Sibiu
f)42	The Brukenthal Palace	Sibiu City	Sibiu
f)43	Hanul Domnesc	Suceava City	Suceava
f)44	Hanul Manuc	Bucharest City	
f)45	The Melik House	Bucharest City	
f)46	The Ghica-Tei Palace	Bucharest City	
f)47	The Șuțu House	Bucharest City	
f)48	The Știrbei Palace	Bucharest City	
f)49	The Romanian Atheneum	Bucharest City	
f)50	'Bufetul' Arhitect Mincu	Bucharest City	
f)51	Școala Centrală de fete	Bucharest City	
f)52	The Palace of Justice	Bucharest City	
f)53	The 'Aro' Building	Bucharest City	
f)54	The Cotroceni Palace Ensemble	Bucharest City	
f)55	The 'Bulevard' Hotel	Bucharest City	
f)56	The Vernescu House	Bucharest City	
f)57	The C.E.C Palace	Bucharest City	
f)58	The Post-office Palace	Bucharest City	
f)59	The Cantacuzino Palace	Bucharest City	
f)60	The Oprea Soare House	Bucharest City	
f)61	The Minovici vila	Bucharest City	
f)62	The School of Architecture	Bucharest City	
f)63	The Museum of the Romanian Peasant	Bucharest City	
f)64	The Mayors' Office	Bucharest City	
f)65	The Law School	Bucharest City	
f)66	The Ministry of Industries	Bucharest City	
f)67	The Military Academy	Bucharest City	
f)68	The Palace of the Council of Ministers	Bucharest City	

No	Name	Administrative-territorial Unit	County
f)69	The house at 49 Kiseleff Avenue	Bucharest City	
f)70	The UCB Residential Park	Bucharest City	

g) Urban ensembles

No	Name	Administrative-territorial unit	County
g)1	Fortified urban ensemble	Cty of Alba Iulia	Alba
g)2	Fortified urban ensemble	Town of Sebeş	Alba
g)3	Historic Centre	Commune of Roşia Montană, village of Roşia Montană	Alba
g)4	Historic Centre of the Town	City of Câmpulung	Argeş
g)5	Historic Centre of the Town	City of Curtea de Argeş	Argeş
g)6	Fortified urban ensemble	City of Bistriţa	Bistriţa-Năsăud
g)7	Historic Centre of the Town	City of Botoşani	Botoşani
g)8	Fortified urban ensemble	City of Braşov	Braşov
g)9	Historic Centre of the Town	City of Brăila	Brăila
g)10	Fortified urban ensemble	City of Cluj-Napoca	Cluj
g)11	Historic Centre	Town of Gherla	Cluj
g)12	Târgovişte Historic Centre	City of Târgovişte	Dâmboviţa
g)13	Monumental Ensemble of Constantin Brâncuşi	City of Târgu Jiu	Gorj
g)14	Fortified urban ensemble	City of Sighişoara	Mureş
g)15	Historic Centre of the Town	City of Caracal	Olt
g)16	Fortified urban ensemble	City of Sibiu	Sibiu
g)17	Fortified urban ensemble	City of Mediaş	Sibiu
g)18	Historic Centre of the Town	City of Timişoara	Timiş
g)19	Sulina Historic Centre	Town of Sulina	Tulcea
g)20	Historic Centre of the Town	City of Bucharest	

h) Wooden churches

No	Name	Administrative-territorial unit	County
h)1	Sfântul Nicolae Church	Commune of Berghin, village of Ghirbom	Alba
h)2	Sfânta Treime Church	Commune of Vidra, village of Goieşti	Alba
h)3	Sfinţii Arhangheli Church	Commune of Ponor, village of Geogel	Alba
h)4	Church Sfinţii Arhangheli	Commune of Vadul Moţilor, village of Lăzeşti	Alba
h)5	The old Sfinţii Arhangheli wooden church	Commune of Fărău, village of Şilea	Alba
h)6	The wooden church	Commune of Brazii, village of Buceava-Şoimuş	Arad
h)7	Pogorârea Sfântului Duh Church	Commune of Hălmagiu, village of Bodeşti	Arad
h)8	Înălţarea Domnului Church	Commune of Pleşcuţa, village of Budeşti	Arad
h)9	Înălţarea Domnului Church	Commune of Coseşti, village of Jupâneşti	Argeş
h)10	Vovidenia Church	Commune of Mărgineni, village of Luncani	Bacău

No	Name	Administrative-territorial Unit	County
h)11	Wooden church of the former Pogleşu hermitage	Commune of Corbasca, village of Pogleş	Basău
h)12	Sfinşii Arhangheli Church	Commune of Pomezzeu, village of Cămpani de Pomezzeu	Bihor
h)13	Adormirea Maicii domnului Church	Commune of Sămbăta, village of Copăceni	Bihor
h)14	Sfântul Gheorghe Church	Commune of Ţeşchea, village of Hotar	Bihor
h)15	Sfântul Teodor Tiron Church	Commune of Rieni, village of Rieni	Bihor
h)16	Sfântul Nicolae Church	Commune of Derna, village of Sacalasău	Bihor
h)17	Sfinşii Voievozi Church	Commune of Băluşeni, village of Băluşeni	Botoşani
h)18	Adormirea Maicii Domnului Church	Commune of Brăeşti, village of Brăeşti	Botoşani
h)19	Sfinşii Arhangheli Church	Commune of Bobălna, village of Cremenea	Cluj
h)20	Pogorărea Sfântului Duh Church	Commune of Mănăstireni, village of Dretea	Cluj
h)21	Sfinşii Arhangheli Church	Commune of Căpuşu Mare, village of Păniceni	Cluj
h)22	Sfinşii Arhangheli Church'din deal'	Commune of Căţcău, village of Sălişca	Cluj
h)23	The Wooden Church	Commune of Chinteni, village of Săliştea Veche	Cluj
h)24	Sfinşii Arhangheli Church	Commune of Sic, village of Sic	Cluj
h)25	Sfinşii Voievozi Church	Commune of Bălăneşti, village of Bălăneşti	Gorj
h)26	Cuvioasa Paraschiva Church	Commune of Bălăneşti, village of Glodeni	Gorj
h)27	Sfântul Nicolae Church	Commune of Leleşti, village of Leleşti	Gorj
h)28	'Intrarea în Biserică' Church	Commune of Cruşeş, village of Slăvuţa	Gorj
h)29	Sfântul Dumitru Church	Commune of Schela, village of Schela	Gorj
h)30	Sfântul Nicolae Church	Commune of Bilbor, village of Bilbor	Harghita
h)31	Sfântul Gheorghe Church	Commune of Săndominic, village of Săndominic	Harghita
h)32	Church of the former Sfântul Ilie Monastery of Săuceni	Town of Topliţa	Harghita
h)33	Cuvioasa Parascheva Church	Commune of Mirosloveşti, village of Mirosloveşti	Iaşi
h)34	Sfântul Gheorghe Church	Commune of Dumeşti, village of Păuşeşti	Iaşi
h)35	Sfântul Nicolae Church	Commune of Bogdan Vodă, village of Bogdan Vodă	Maramureş
h)36	Sfântul Nicolae Church	Commune of Budeşti, village of Budeşti	Maramureş
h)37	Naşterea Maicii Dmnului Church	Commune of Călineşti, village of Călineşti	Maramureş
h)38	Naşterea Maicii Dmnului Church	Commune of Ieud, village of Ieud	Maramureş
h)39	Naşterea Maicii Dmnului Church ('of the hill')	Commune of Ieud, village of Ieud	Maramureş

No	Name	Administrative-territorial Unit	County
h)40	Sfânta Paraschiva Church	Commune of Poienile Izei, village of Poienile Izei	Maramureș
h)41	Sfinții Arhangheli Church	Commune of Șișești, village of Plopiș	Maramureș
h)42	Sfinții Arhangheli Church	Commune of Șișești, village of Șurdești	Maramureș
h)43	Sfinții Arhangheli Church	Commune of Remetea Chioarului, village of Remetea Chioarului	Maramureș
h)44	Sfinții Arhangheli Church	Town of Târgu Lăpuș, village of Rogoz	Maramureș
h)45	Sfinții Arhangheli Church	Commune of Rozavlea, village of Rozavlea	Maramureș
h)46	Cuvioasa Paraschiva Church	Commune of Ocna Șugataș, village of Sat-Șugataș	Maramureș
h)47	Adormirea Maicii Domnului Church	Commune of Săcălășeni, village of Săcălășeni	Maramureș
h)48	Sfântul Nicolae Church	Commune of Bârsana, village of Bârsana	Maramureș
h)49	Sfântul Dumitru Church	Town of Baia de Aramă, village of Negoești	Mehedinți
h)50	Tăierea Capului Sfântului Ioan Botezătorul Church	Commune of Broșteni, village of Căpățâneni	Mehedinți
h)51	Sfântul Nicolae Church	Commune of Balta, village of Costești	Mehedinți
h)52	Sfântul Gheorghe Church	Commune of Tâmba, village of Valea Ursului	Mehedinți
h)53	Sfinții Arhangheli Church	Commune of Lunca, village of Băița	Mureș
h)54	Sfântul Ioan Botezătorul Church	Commune of Ceaușu de Câmpie, village of Porumbeni	Mureș
h)55	Sfinții Arhangheli Church	Commune of Pănet, village of Pănet	Mureș
h)56	Sfântul Nicolae Church of forest	Town of Reghin	Mureș
h)57	Sfinții Arhangheli Church	Commune of Sărmașu, village of Sărmașel	Mureș
h)58	Sfinții Arhangheli Church	Commune of Gălești, village of Troița	Mureș
h)59	Sfântul Nicolae Church	Commune of Acățari, village of Văleni	Mureș
h)60	The wooden church Sfânta Troiță of the former hermitage Cozia-Draga	City of Piatra Neamț	Neamț
h)61	Schimbarea la Față Church	City of Piatra Neamț, town of Văleni	Neamț
h)62	The wooden church Cuvioasa Paraschiva	Commune of Fărcașa, village of Fărcașa	Neamț
h)63	Adormirea Maicii Domnului Church	Commune of Leleasca, village of Leleasca	Olt
h)64	Sfinții Arhangheli Church	Commune of Socond, village of Soconzel	Satu Mare
h)65	Sfinții Arhangheli Church	Commune of Hida, village of Baica	Sălaj
h)66	Sfinții Arhangheli Church	Commune of Românași, village of Ciurmărna	Sălaj
h)67	Pogorârea Sfântului Duh Church	Commune of Fildu de Jos, village of Fildu de Sus	Sălaj
h)68	Nașterea Maicii Domnului Church	Commune of Românași, village of Păușa	Sălaj

No	Name	Administrative-territorial Unit	County
h)69	Sfinții Arhangheli Church	Commune of Românași, village of Poarta Sălajului	Sălaj
h)70	Sfânta Maria Church	Commune of Letca, village of Letca	Sălaj
h)71	Adormirea Maicii Domnului Church	Commune of Năpradea, village of Vădurele	Sălaj
h)72	Sfântul Nicolae Church	Commune of Broșteni, village of Broșteni	Suceava
h)73	Sfântul Spiridon Church	Commune of Drăgușeni, village of Drăgușeni	Suceava
h)74	Intrarea în Biserică după Tradiție Church	Commune of Putna, village of Putna	Suceava
h)75	Sfântul Nicolae Church of the former Strâmba hermitage	Commune of Puiești, village of Cetățuia	Vaslui
h)76	Sfântul Gheorghe Church	Commune of Lipovăț, village of Lipovăț	Vaslui
h)77	Sfântul Nicolae Church	Commune of Solești, village of Știoborâni	Vaslui
h)78	Cuvioasa Paraschiva wooden church	Commune of Vaideeni, village of Marița	Vâlcea
h)79	Adormirea Maicii Domnului wooden church	Commune of Costești, village of Pietreni	Vâlcea
h)80	Cuvioasa Paraschiva Church	Commune of Ruginești, village of Ruginești	Vrancea
h)81	Cuvioasa Paraschiva wooden church	Commune of Valea Sării, village of Valea Sării	Vrancea

i) Outdoor ethnographical museums

No	Name	Administrative-territorial unit	County
i)1	The Museum of orchard and viticulture	Commune of Ștefănești, village of Golești	Argeș
i)2	The Ethnographical Museum of Transilvania	City of Cluj-Napoca	Cluj
i)3	The Curtișoara Ethnographical Museum	Town of Bumbești-Jiu, village of Curtișoara	Gorj
i)4	The Ethnographical Museum of Maramueaș	City of Sighetu Marmăției	Maramureș
i)5	The Museum of the Traditional Popular Civilization	City of Sibiu	Sibiu
i)6	The Ethnographical Museum	Commune of Bujoreni, village of Bujoreni	Vâlcea
i)7	Village Museum	City of Bucharest	

j) Churches in the rock

No	Name	Administrative-territorial unit	County
j)1	Negru Vodă Hermitage	Commune of Cetățeni, village of Cetățeni	Argeș
j)2	The Corbii de Piatră Hermitage	Commune of Corbi, village of Jgheaburi	Argeș
j)3	The church compound in the rock	Commune of Bozioru, village of Nucu	Buzău

No	Name	Administrative-territorial Unit	County
j)4	The monastic rock compound: churches, rooms, galleries	Town of Basarabi, village of Basarabi	Constanța
j)5	The rock compound	Commune of Independența	Constanța
j)6	The cell of Daniil Sihastrul	Commune of Putna, village of Putna	Suceava

k) Churches and monastery compounds

No	Name	Administrative-territorial unit	County
k)1	Sfântul Mihail roman-catholic cathedral	City of Alba Iulia	Alba
k)2	Sfânta Treime Cathedral	City of Blaj	Alba
k)3	The church of the former Orthodox Monastery	Commune of Stremț, village of Geoagiu de Sus	Alba
k)4	The Râmeț Monastery	Commune of Râmeț, village of Râmeț	Alba
k)5	Sfântul Gheorghe Church	Commune of Lupșa, village of Lupșa	Alba
k)6	Sfântul Nicolae Church	Town of Zlatna	Alba
k)7	Evangelic Church	Town of Sebeș	Alba
k)8	The Hodoș Bodrog Monastery	Commune of Pecica, village of Bodrogu Vechi	Arad
k)9	Adormirea Maicii Domnului Church	Commune of Hălmagiu, village of Hălmagiu	Arad
k)10	Radna Church	Town of Lipova, village of Radna	Arad
k)11	Sfântul Gheorghe Church	City of Pitești	Argeș
k)12	The Negru Vodă Monastery compound	City of Câmpulung	Argeș
k)13	Sfântul Nicolae Church (Princely)	City of Curtea de Argeș	Argeș
k)14	Episcopal Church of the Argeșului Monastery	City of Curtea de Argeș	Argeș
k)15	The compound the former Aninoasa Monastery	Commune of Aninoasa, village of Aninoasa	Argeș
k)16	The former Tutana Monastery	Commune of Băiculești, village of Tutana	Argeș
k)17	The former Valea Monastery	Commune of Țițești, village of Valea Mănăstirii	Argeș
k)18	Hârtești Church	Commune of Țițești, village of Bucșenești, Lotași	Argeș
k)19	Adormirea Maicii Domnului Church with the ruins of the court of Mareș Băjescu	Commune of Bălilești, village of Băjești	Argeș
k)20	Church of the former Brădet Hermitage	Commune of Brăduleț, village of Brădet	Argeș
k)21	Church of the Cotmeana Monastery	Commune of Cotmeana, village of Cotmeana	Argeș
k)22	Precista Church	City of Bacău	Bacău
k)23	Adormirea Maicii Domnului Church	City of Onești, town of Borzești	Bacău
k)24	The Roman-Catholic Cathedral	City of Oradea	Bihor
k)25	The Ortodox Church 'with the moon'	City of Oradea	Bihor
k)26	The Evangelic Church	Commune of Galații Bistriței, village of Herina	Bistrița-Năsăud
k)27	Sfântul Nicolae - Popăuți Church, with the tower	City of Botoșani	Botoșani
k)28	The Church 'Întâmpinarea Domnului și Sfinții Împărați (Ruset)	City of Botoșani	Botoșani
k)29	The Upsenia Church (Adormirea Maicii Domnului), with the belfry	City of Botoșani	Botoșani

No	Name	Administrative-territorial Unit	County
k)30	The Princely Church Sfântul Gheorghe with belfry	City of Botoșani	Botoșani
k)31	The Princely Church Sfântul Nicolae with belfry	City of Dorohoi	Botoșani
k)32	The Neagră Church	City of Brașov	Brașov
k)33	The Church Sfântul Bartolomeu	City of Brașov	Brașov
k)34	The Princely Church Sfântul Nicolae of Schei	City of Brașov	Brașov
k)35	The brancovan Church Sfântul Nicolae	City of Făgăraș	Brașov
k)36	The Ortodox Church Sfântul Nicolae	Town of Râșnov	Brașov
k)37	The church of the brancovan Monastery	Commune of Voila, village of Sâmbăta de Sus	Brașov
k)38	The Evangelic Church	Commune of Șercaia, village of Hălmeag	Brașov
k)39	The former Măxineni Monastery	Commune of Măxineni, village of Măxineni	Brăila
k)40	Sfântul Arhanghel Mihail Church	City of Brăila	Brăila
k)41	The compound of the former Monastery	City of Râmnicu Sărat	Buzău
k)42	The compound of the former Bradu Monastery	Commune of Tisău, village of Haleș	Buzău
k)43	The compound of the former Plătărești Monastery	Commune of Plătărești, village of Plătărești	Călărași
k)44	The Romano-Catholic Sfântul Mihail Church	Cit of Cluj-Napoca	Cluj
k)45	The Cathedral of the Ortodox Archbishopric	Cit of Cluj-Napoca	Cluj
k)46	The Lutheran Matia Church	Cit of Cluj-Napoca	Cluj
k)47	The Monastery of the Franciscans	Cit of Cluj-Napoca	Cluj
k)48	The Adormirea Maicii Domnului Church of the former Monastery of Feleac	Commune of Feleacu, village of Feleacu	Cluj
k)49	The Armenian Church	Town of Gherla	Cluj
k)50	The Ortodox Church of the Bishopric of Vadului and Feleacului	Commune of Vad, village of Vad	Cluj
k)51	The Esmahan Sultan Mosque	City of Mangalia	Constanța
k)52	The ruins of the church and the vestiges of the medieval compound	Commune of Brăduț, village of Filia	Covasna
k)53	The Lutheran church	City of Sfântu Gheorghe, village of Chilieni	Covasna
k)54	The Roman-Catholic church	Commune of Ghelinta, village of Ghelinta	Covasna
k)55	The Dealu Monastery	City of Târgoviște	Dâmbovița
k)56	The Princely church	City of Târgoviște	Dâmbovița
k)57	Sfânta Vineri church	City of Târgoviște	Dâmbovița
k)58	Stelea Monastery	City of Târgoviște	Dâmbovița
k)59	Târgului church	City of Târgoviște	Dâmbovița
k)60	The church of the former Cobia Monastery	Commune of Cobia, village of Mănăstirea	Dâmbovița
k)61	The Bucovăț Monastery	City of Craiova, town of Mofleni	Dolj
k)62	The church of the former Jitianu Monastery	Commune of Podari, village of Balta Veche	Dolj
k)63	Precista church	City of Galați	Galați
k)64	The Comana Monastery	Commune of Comana, village of Comana	Giurgiu
k)65	The Polovragi Monastery	Commune of Polovragi, village of Polovragi	Gorj
k)66	The Tismana Monastery	Commune of Tismana, village of Tismana	Gorj

No	Name	Administrative-territorial Unit	County
k)67	Sfântul Nicolae church	Commune of Mugeni, village of Porumbenii Mari	Harghita
k)68	The tower and vestiges of the medieval church	Commune of Cârța, village of Tomești	Harghita
k)69	The Lutheran church	Commune of Ulieș, village of Daia	Harghita
k)70	The Roman-Catholic church	Commune of Ciucsângeorgiu, village of Armășeni	Harghita
k)71	The Franciscan Monastery and the chapels on the Șumleul Mic hill	City of Miercurea-Ciuc	Harghita
k)72	The Lutheran church	Commune of Mugeni, village of Mugeni	Harghita
k)73	Sfântul Nicolae church	Commune of Hărău, village of Bârsău	Hunedoara
k)74	The church Adormirea Maicii Domnului	Commune of Crișcior, village of Crișcior	Harghita
k)75	Sfântul Nicolae Church	Commune of Densuș, village of Densuș	Harghita
k)76	Sfântul Ilie Church	Commune of Densuș, village of Peșteana	Harghita
k)77	Sfântul Mihail Church	Commune of Gurasada village of Gurasada	Harghita
k)78	Sfântul Nicolae Church	City of Hunedoara	Harghita
k)79	Sfântul Nicolae Church	Commune of Vețel, village of Leșnic	Harghita
k)80	Sfântul Nicolae Church	Commune of Ribița, village of Ribița	Harghita
k)81	Sfântul Gheorghe Church	Commune of Sântămăria-Orlea, village of Sânpetru	Harghita
k)82	The Lutheran, former Ortodox Church	Commune of Sântămăria-Oelea, village of Sântămăria-Orlea	Harghita
k)83	Adormirea Maicii Domnului Church	Town of Călan, village of Strei	Harghita
k)84	Sfântul Gheorghe Church	Town of Călan, village of Streișângeorgiu	Harghita
k)85	The Church of the Cânde dukes	Commune of Râu de Mori, village of Suseni	Harghita
k)86	Sfântul Nicolae Princely Church	City of Iași	Iași
k)87	The Church of the Golia Monastery	City of Iași	Iași
k)88	The Trei Ierarhi Church	City of Iași	Iași
k)89	The Sfântul Sava Church	City of Iași	Iași
k)90	The Barnovschi Church	City of Iași	Iași
k)91	The compound of the Galata Monastery	City of Iași	Iași
k)92	The compound of the Cetățuia Monastery	City of Iași	Iași
k)93	The compound of the Frumoasa Monastery	City of Iași	Iași
k)94	The compound of the Moldova and Bucovina Metropolitan church: Intâmpinarea Domnului Cathedral, Sf. Gheorghe Church, the Metropolitan Palace, administrative buildings	City of Iași	Iași
k)95	The compound of the Bârnova Monastery	Commune of Bârnova, village of Bârnova	Iași
k)96	The church of the former Monastery Coborârea Sfântului Duh	Commune of Dobrovăț, village of Dobrovăț	Iași
k)97	The Sfânta Paraschiva Church	Commune of Cotnari, village of Cotnari	Iași
k)98	The Sfântul Gheorghe Church	Town of Hârlău	Iași

No	Name	Administrative-territorial Unit	County
k)99	The church of the former Hlincea hermitage	Commune of Ciurea, village of Hlincea	Iași
k)100	The Sfântul Spiridon church (Round)	Commune of Lețcani, village of Lețcani	Iași
k)101	The Big Synagogue	City of Iași	Iași
k)102	The compound of the Snagov Monastery	Commune of Snagov, village of Snagov	Ilfov
k)103	The compound of the Gura Humorului Monastery	Commune of Butoiești, village of Gura Motrului	Mehedinți
k)104	The compound of the Strehăia Monastery	Town of Strehăia	Mehedinți
k)105	The Topolnița hermitage	Commune of Izvoru Bârzii, village of Schitu Topolniței	Mehedinți
k)106	The ruins of the Vodița Monastery	City of Drobeta-Turnu Severin	Mehedinți
k)107	The church of the Hill	City of Sighișoara	Mureș
k)108	The church and tower Sfântul Ioan Botezătorul	City of Piatra Neamț	Neamț
k)109	The compound of the Neamț Monastery	Commune of Vânători-Neamț, village of Vânători-Neamț	Neamț
k)110	The compound of the Secu Monastery	Commune of Vânători-Neamț, village of Vânători-Neamț	Neamț
k)111	The compound of the Bistrița Monastery	Commune of Vișoara, village of Bistrița	Neamț
k)112	The Sfântul Mihail Church	Commune of Războieni, village of Războieni	Neamț
k)113	The compound of the Tazlău Monastery	Commune of Tazlău, village of Tazlău	Neamț
k)114	The church of the Pângărați Monastery	Commune of Pângărați, village of Pângărați	Neamț
k)115	The compound of the Agapia Monastery	Commune of Agapia, village of Agapia	Neamț
k)116	The Armenian church	City of Roman	Neamț
k)117	The compound of the Brâncoveni Monastery	Commune of Brâncoveni, village of Brâncoveni	Olt
k)118	The compound of the Căluu Monastery	Commune of Oboga, village of Căluu	Olt
k)119	The compound of the Brebu Monastery	Commune of Brebu, village of Brebu	Prahova
k)120	The compound of the former Apostolache Monastery	Commune of Apostolache, village of Apostolache	Prahova
k)121	The Sinaia Monastery	Town of Sinaia	Prahova
k)122	The Lutheran church of the former Benedictine Monastery	Commune of Acăț, village of Acăț	Satu Mare
k)123	The Sfânta Maria Evangelic church	City of Sibiu	Sibiu
k)124	The Sfânta Maria Evangelic church with the fortification	City of Mediaș	Sibiu
k)125	The Sfinții Arhangheli church	Town of Ocna Sibiului	Sibiu
k)126	The Sfântul Nicolae church	Commune of Turnu Roșu, village of Turnu Roșu	Sibiu
k)127	The Evangelic church with the fortified precincts	Town of Cisnădie	Sibiu
k)128	The compound of the former cistercian monastery	Commune of Cârța, village of Cârța	Sibiu
k)129	The Evangelic church	Town of Cisnădie, village of Cisnădioara	Sibiu
k)130	The Sfântul Gheorghe Mirăuți church	City of Suceava	Suceava
k)131	The church of the Sfântul Ioan cel Nou Monastery	City of Suceava	Suceava
k)132	The Sfântul Dumitru church	City of Suceava	Suceava

No	Name	Administrative-territorial Unit	County
k)133	The Nașterea Sfântului Ioan Botezătorul (Coconilor) church	City of Suceava	Suceava
k)134	The compound of the Zamca Monastery	City of Suceava	Suceava
k)135	The Sfântul Nicoale (Bogdana) Church	City of Râdăuți	Suceava
k)136	The Sfânta Treime church	Town of Siret	Suceava
k)137	The ruins of the Catholic church	Commune of Baia, village of Baia	Suceava
k)138	The Sfântul Gheorghe church (Alba)	Commune of Baia, village of Baia	Suceava
k)139	The Adormirea Maicii Domnului church	Commune of Baia, village of Baia	Suceava
k)140	The sfântul Nicolae church	Commune of Grămești, village of Bălinești	Suceava
k)141	The compound of the Putna Monastery	Commune of Putna, village of Putna	Suceava
k)142	The Sfânta Parascheva Monastery	Commune of Dolhești, village of Dolheștii Mari	Suceava
k)143	The compound of the Dragomirna Monastery	Commune of Mitocu Dragomirnei, village of Mitocu Dragomirnei	Suceava
k)144	The Înălțarea Sfintei Cruci Church	Commune of Volovăț, village of Volovăț	Suceava
k)145	The Tăierea Capului Sfântului Ioan Botezătorul Church	Commune of Udești, village of Reuseni	Suceava
k)146	The Tuturor Sfinților Church	Todirești, Părhăuți	Suceava
k)147	The compound of the Slatina Monastery	Commune of Slatina, village of Slatina	Suceava
k)148	The Înălțarea Sfintei Cruci Church	Commune of Pătrăuți, village of Pătrăuți	Suceava
k)149	The church of the Voroneț Monastery	Town of Gura Humorului, village of Voroneț	Suceava
k)150	The Sfântul Ilie church	Commune of Scheia, village of Sfântu Ilie	Suceava
k)151	The Tăierea Capului Sfântului Ioan Botezătorul Church	Commune of Arbore, village of Arbore	Suceava
k)152	The compound of the Probotă Monastery	Commune of Dolhasca, village of Probotă	Suceava
k)153	The ruins of the old church Sfântul Nicolae din Poiană	Commune of Dolhasca, village of Probotă	Suceava
k)154	The compound of the Humorului Monastery	Commune of Mănăstirea Huorului, village of Mănăstirea Humorului	Suceava
k)155	The ruins of the old church	Commune of Mănăstirea Huorului, village of Mănăstirea Humorului	Suceava
k)156	The compound of the Moldovița monastery	Commune of Vatra Moldoviței, village of Vatra Moldoviței	Suceava
k)157	The ruins of the old church	Commune of Vatra Moldoviței, village of Vatra Moldoviței	Suceava
k)158	The compound of the Râșca Monastery	Commune of Râșca, village of Râșca	Suceava
k)159	The compound of the Sucevița Monastery	Commune of Sucevița, village of Sucevița	Suceava
k)160	The Romano-Catholic Cathedral	City of Timșoara	Timiș
k)161	The Sfinții Trei ierarhi Cathedral	City of Timșoara	Timiș
k)162	The pile of the Partoș Monastery	Commune of Banloc, village of Partoș	Timiș

No	Name	Administrative-territorial Unit	County
k)163	The Sfinții Arhangheli Church	Commune of Banloc village of Partoș	Timiș
k)164	The Schimbarea la Față Church of the Săraca Monastery	Commune of Gătaia, village of Șemlacu Mic	Timiș
k)165	The Basilica with the tomb (martirium)	Commune of Niculițel, village of Niculițel	Tulcea
k)166	The Sfântul Atanasie church	Commune of Niculițel, village of Niculițel	Tulcea
k)167	The Ali Gazi Pașa Mosque	Babadag	Tulcea
k)168	The Sfântul Ioan Botezătorul princely church	City of Vaslui	Vaslui
k)169	The Arnota Monastery	Commune of Costești, village of Bistrița	Vâlcea
k)170	The Bistrița Monastery	Commune of Costești, village of Bistrița	Vâlcea
k)171	The compound of the Cozia Monastery	Town of Călimănești, village of Căciulata	Vâlcea
k)172	The church of the Cozia hospital	Town of Călimănești, village of Căciulata	Vâlcea
k)173	The Nașterea Maicii domnului church of the Ostrov hermitage	Town of Călimănești	Vâlcea
k)174	The compound of the Mănăstirea dintr-un Lemn	Commune of Dezrobiți, village of Dezrobiți	Vâlcea
k)175	The Fedeleșoiu Hermitage	Commune of Dăești, village of Fedeleșoiu	Vâlcea
k)176	The compound of the Govora Monastery	Commune of Mihăești, village of Govora	Vâlcea
k)177	The pile of the Horezu Monastery	Town of Horezu, village of Romanii de Jos	Vâlcea
k)178	The church of Intrarea în Biserică și Sfântul Ioan Botezătorul	Town of Horezu, village of Urșani	Vâlcea
k)179	The compound of the Mamul Monastery	Commune of Lungești, village of Stănești-Lunca	Vâlcea
k)180	The church Adormirea Maicii Domnului	Commune of Lungești, village of Stănești-Lunca	Vâlcea
k)181	The Cornetu Hermitage	Commune of Racovița, village of Tuțulești	Vâlcea
k)182	The former Dobrușa hermitage, the Vovidenia church	Commune of Ștefănești, village of Dobrușa	Vâlcea
k)183	The compound of the former Mera Monastery	Commune of Mera, village of Mera	Vrancea
k)184	The Armenian Church	City of Focșani	Vrancea
k)185	The Curtea Veche church	City of Bucharest	
k)186	The Mărcuța Church	City of Bucharest	
k)187	The Mihai Vodă Church	City of Bucharest	
k)188	The Radu Vodă Church	City of Bucharest	
k)189	The compound of the Plumbuita Monastery	City of Bucharest	
k)190	The Patriarchie Church	City of Bucharest	
k)191	The Antim Church	City of Bucharest	
k)192	The Fundenii Doamnei Church	City of Bucharest	
k)193	The Stavropoleos Church	City of Bucharest	
k)194	The Crețulescu Church	City of Bucharest	
k)195	The Doamnei Church	City of Bucharest	
k)196	The Colței Church	City of Bucharest	
k)197	The Synagogue (The Museum of the Jewish community)	City of Bucharest	

l) Industrial architecture; transport constructions

No	Name	Administrative-territorial unit	County
l)1	The Roman galleries of the gold mines	Commune of Roşia Montană, village of Roşia Montană	Alba
l)2	The Mill	City of Reşiţa	Caraş - Severin
l)3	The Bridge 'Eng. Anghel Saligny'	Town of Cernavodă	Constanţa
l)4	The Adamul Vechi mine	Commune of Baia de Criş, village of Căraci	Hunedoara
l)5	The Old Mill	Commune of Ghelari, village of Govăjdia	Hunedoara
l)6	The 'Roman Stairs' mine gallery in the Barza mine	City of Brad, village of Ruda - Brad	Hunedoara
l)7	The Mill	Town of Călan	Hunedoara
l)8	The Târgu Frumos Railway Station	Town of Târgu Frumos	Iaşi
l)9	The Stone Bridge	Commune of Ştefan cel Mare, village of Căntălăreşti	Vaslui
l)10	The Malaxa Works	City of Busharest	
l)11	The Ford Branch (Floreasca)	City of Bucharest	
l)12	The Filaret Railway Station	City of Bucharest	
l)13	Asan's Mill	City of Bucharest	

m) Folk architecture monuments (rural housing)

No	Name	Administrative-territorial unit	County
m)1	Wooden houses - XIX-th century	Commune of Vidra, village of Goleşti	Alba
m)2	Houses - XVIII - XIX th centuries	Commune of Roşia Montană, village of Roşia Montană	Alba
m)3	Houses - XVIII th century	Commune of Vadu Moţilor, village of Vadul Moţilor	Alba
m)4	The Avram Iancu House	Commune of Avram Iancu, village of Avram Iancu	Alba
m)5	The Hagi Tudorache House	Commune of Budeasa, village of Budeasa Mare	Argeş
m)6	The Cartianu House	Commune of Turcineşti, village of Cartiu	Gorj
m)7	Seclers' gates	Commune of Brădeşti, village of Satu Mare	Harghita
m)8	The Deac Vasile Moşu wooden house	Commune of Bogdan Vodă, village of Bogdan Vodă	Maramureş
m)9	The Iurca wooden house	Commune of Deseşti, village of Hărniceşti	Maramureş
m)10	The Polina Omir House	Commune of Şişeşti, village of Şişeşti	Mehedinţi
m)11	The wooden house of Maria Moacă	Commune of Izvoru Bârzii, village of Schitu Topolniţei	Mehedinţi
m)12	The Buzescu House	Commune of Strejeşti, village of Strejeştii de Sus	Olt
m)13	The House of Mărcuţ Iacob of Gligor	Commune of Călineşti-Oaş, village of Călineşti-Oaş	Satu-Mare
m)14	The Matisievici Ecaterina Household	Commune of Moldoviţa, village of Demacuşa	Suceava
m)15	The Household compound with fortification of Maria Veruleac	Commune of Breaza, village of Breaza de Sus	Suceava

n) Traditional rural ensembles

No	Name	Administrative-territorial unit	County
n)1	Mill	Commune of Rucăr, village of Rucăr	Argeş
n)2	Mills and whirlpools	Commune of Prigor, village of Putna	Caraş-Severin
n)3	The mills	Commune of Ciclova Română	Caraş-Severin
n)4	The hill cellars	Commune of Bălăneşti, village of Glodeni	Gorj
n)5	Three wooden mills with well bucket	Commune of Ponoarele, village of Ponoarele	Mehedinţi
n)6	The wine cellar of Buzescu	Commune of Priseaca, village of Buiceşti	Olt
n)7	The water mill	Commune of Ţifeşti, village of Vităneşti	Vrancea

2. The Monuments and Archeological Sites

a) The palaeolithic complexes

No	Name	Administrative-territorial unit	County
a)1	The Superior paleolithic settlement (in the point of 'Malu Galben')	Commune of Mitoc, village of Mitoc	Botoşani
a)2	Palaeolithic settlement (in the point of 'Izvor')	Commune of Ripiceni, village of Ripiceni	Botoşani
a)3	The housing vestiges of the epochs: Epipalaeolithic, Eneolithic and Bronze (in the point of "Peştera Hoţilor")	Town of Băile Herculane	Caraş-Severin
a)4	Housing strata since the Middle Palaeolithic and Postpalaeolithic with tools, especially of quartz (in the point of "Peştera Muierilor")	Commune of Baia de Fier, village of Baia de Fier	Gorj
a)5	The Musterian housing stratum (in the point of "Peştera Bordul Mare")	Commune of Pui, village of Ohaba Ponor	Hunedoara
a)6	The cave with paintings on the rock of the superior palaeolithic (in the stone quarry)	Commune of Letca, village of Cuciulat	Sălaj

b) Neolithic and palaeolithic settlements

No	Name	Administrative-territorial unit	County
b)1	The Precucuteni and Cucuteni cultures (in the point of 'Dealul Ghindaru')	Commune of Poduri, village of Poduri	Bacău
b)2	Settlement - The Cucuteni culture	Commune of Traian, village of Zăpodia	Bacău
b)3	Settlement - The Cucuteni culture (in the point of 'Dealul Boia')	Commune of Frumuşica, village of Rădeni	Botoşani
b)4	Neolithic settlement of tell type	Town of Hârşova	Constanţa
b)5	Settlement of the Cucuteni culture (in the point of 'Dâmbul Morii')	Commune of Cucuteni, village of Băiceni	Iaşi
b)6	Settlement - The Cucuteni culture (in the point of 'La Silişte')	Commune of Strunga, village of Hăbăşeşti	Iaşi
b)7	Settlement - The Cucuteni culture (in the point of 'Cetăţuia Frumuşica')	Commune of Bodeşti, village of Bodeştii de Jos	Neamţ

No	Name	Administrative-territorial Unit	County
b)8	Settlement - The Cucuteni culture (in point of 'Dealul Nedeea')	Commune of Bârgăuani, village of Ghelăiești	Neamț
b)9	Settlement - The Cucuteni culture and Dacian fortress	Commune of Piatra Șoimului, village of Piatra Șoimului	Neamț
b)10	Settlement - The Cucuteni culture (in point of 'Dealul Fântânilor')	Commune of Zănești, village of Traian	Neamț
b)11	Neolithic tells (Hamangia culture), funeral tumuli	Commune of Baia, village of Baia	Tulcea

c) The settlements and necropolises of the Bronze Era

No	Name	Administrative-territorial unit	County
c)1	The fortified settlement of the Otomani culture (in the point of "Cetățuia")	Commune of Sălacea, village of Otomani	Bihor
c)2	Settlement of the Monteoru culture (the Middle Bronze Epoch), Cucuteni settlement, incineration necropolises; housing vestiges (in the point of "Cetățuia")	Commune of Merei, village of Sărata Monteoru	Buzău
c)3	The funeral tumuli from the Final Bronze Era - the Lăpuș group	Commune of Lăpuș, village of Lăpuș	Maramureș
c)4	Settlement of the Suciu culture (the Final Bronze Era) and settlements belonging to the Suciu de Sus culture	Commune of Suciu de Sus, village of Suciu de Sus	Maramureș
c)5	Settlement of the Garla Mare culture (the Middle Bronze Era) (in the point of "La Garloasca")	Commune of Gârla Mare, village of Gârla Mare	Mehedinți
c)6	Settlement of the Monteoru culture; Dacian settlement (in the point of "Cetățuia")	Commune of Dumbrăveni, village of Cârdești	Vrancea

d) Fortifications and settlements from the first Iron Era (hallstattian)

No	Name	Administrative-territorial unit	County
d)1	Fortifications	Commune of Ciugud, village of Teleac	Alba
d)2	Fortifications	Commune of Sântana, village of Sântana	Arad
d)3	Fortifications (in the point of "Dealul Bobeica")	Commune of Mihai Eminescu, village of Stâncești	Botoșani
d)4	Fortifications for the Babadag culture	Town of Babadag	Tulcea
d)5	Getic settlement	Town of Babadag	Tulcea
d)6	Roman fortifications	Town of Babadag	Tulcea
d)7	Hallstattian fortifications (in the point of "Piatra lui Sava")	Commune of Mahmudia, village of Beștepe	Tulcea
d)8	Getic fortress (in the point of "Cetățuia")	Commune of Mahmudia, village of Beștepe	Tulcea
d)9	The fortifications	Commune of Beidaud, village of Beidaud	Tulcea

e) Dacian fortifications

No	Name	Administrative-territorial unit	County
e)1	Dacian fortifications (in the point of "La Cetate")	Commune of Săsciori, village of Căpâlna	Alba
e)2	Dacian fortifications; funeral tumuli (in the point of "Cetățuie")	Town of Cugir	Alba
e)3	The Apoulon Dacian fortress (in the point of "Piatra Craivii")	Commune of Cricău, village of Craiva	Alba
e)4	The antique Dava; archeologic compound representing successive settlements since the Neolithic (Cucuteni A-B) and the Bronze Era (the Costișa and Monteoru culture) (in the point of "Zargidava")	Commune of Negri, village of Brad	Bacău
e)5	The antique Tamasiava Dava; funeral tumuli; fortifications from the Bronze Era, Monteoru culture (in the point of "Cetățuie")	Commune of Horgești, village of Răcățoiu de Jos	Bacău
e)6	Dacian fortifications, in the sanctuaries' zone	Commune of Ormeniș, village of Augustin	Brașov
e)7	Dacian Dava (in the point of "Cetățuie")	Commune of Vernești, village of Cărlomănești	Buzău
e)8	Fortress and Dacian settlement (in the point of "Grad")	Commune of Pojejena, village of Divici	Caraș-Severin
e)9	Getic Dava (in the point of "Valea lui Voicu")	Commune of Oltina, village of Satu Nou	Constanța
e)10	Getic Dava (in the point of "Vadul Vacilor")	Commune of Oltina, village of Satu Nou	Constanța
e)11	Dacian fortifications with stone walls (in the point of "Verele")	Commune of Sânzieni, village of Cașinu Mic	Covasna
e)12	Dacian fortifications with 3 terraces enclosed by stone walls (in the point of "Valea Zanelor"- Dealul Florilor)	Town of Covasna	Covasna
e)13	Dacian fortress	Commune of Coțofenii din Dos, village of Coțofenii din Dos	Dolj
e)14	Dacian fortress (in the point of "La Cucuioara")	Commune of Calopăr, village of Bâzdana	Dolj
e)15	Fortified Geto-Dacian settlement; funeral tumuli (in the point of "La Nucet")	Commune of Mihăilești, village of Popești	Giurgiu
e)16	Geto-Dacian fortifications; settlement (in the point of "Crucea lui Ursache")	Town of Polovragi, village of Polovragi	Gorj
e)17	Dacian fortress with a stone wall, 3 ditches and earth walls (in the point of "Dealul Desag")	Commune of Zetea, village of Sub Cetate	Harghita
e)18	Complex Dacian fortifications, including earth walls, walls and towers of squared stones; sanctuaries of alignment type	Commune of Orăștioara de Sus, village of Costești	Hunedoara
e)19	Dacian fortifications including walls and towers of squared stone (in the point of "Cetățuia Inaltă")	Commune of Orăștioara de Sus, village of Costești	Hunedoara
e)20	Dacian fortifications including two precincts with walls and towers of squared stone (in the point of "La Blidaru")	Commune of Orăștioara de Sus, village of Costești	Hunedoara
e)21	Sarmizegetusa, the political, cultural and religious capital of Dacia (in the point of "Dealul Grădiștii")	Commune of Orăștioara de Sus, village of Grădiștea de Munte	Hunedoara

No	Name	Administrative-territorial Unit	County
e)22	Dacian fortifications with walls and survey towers made of blocks of squared stone (in the point of "Varful lui Hulpe")	Commune of Orăștioara de Sus, village of Grădiștea de Munte	Hunedoara
e)23	Dacian settlement with fortifications made of blocks of squared stone (in the point of "Fețele Albe")	Commune of Orăștioara de Sus, village of Grădiștea de Munte	Hunedoara
e)24	Dacian fortifications including the precincts and towers made of squared stone; the mediaeval precincts made of stone bound	Commune of Boșorod, village of Luncani	Hunedoara
e)25	Dacian fortifications including walls and towers of squared stones, fighting platforms, sanctuary (in the Point of "Piatra Cetății")	Commune of Bănița, village of Bănița	Hunedoara
e)26	Thracian-Getic fortress (in the point of "Dealul Cătălina")	Commune of Cotnari, village of Cotnari	Iași
e)27	Dacian fortress (in the point of "Dealul Cozia")	City of Piatra Neamț	Neamț
e)28	Dacian fortress including fortifications (in the point of " Dealul Batca Doamnei")	City of Piatra Neamț	Neamț
e)29	Dacian fortress with two dwelling-towers (in the point of " Dealul Cătinaș")	Commune of Tilișca, village of Tilișca	Sibiu
e)30	Getic-Dacian fortress	Town of Zimnicea	Teleorman
e)31	Tumulus necropolis; bronze era necropolis; settlement and medieval necropolis (in the point "Campiul mortilor")	Town of Zimnicea	Teleorman
e)32	Getic fortress	Commune of Mahmudia, village of Beștepe	Tulcea
e)33	Thracian-Getic fortress (in the point of "Cetățuia Mogoșești")	Commune of Arsura, village of Arsura	Vaslui
e)34	Thracian-Getic fortress (in the point of "Dealul Bobului")	Commune of Bunești-Averești, village of Bunești	Vaslui
e)35	The ancient Buridava, compound of civil settlements around fortified heights, with terraces, palisades and defence towers (in the point of "Cosota")	Town of Ocnele Mari, village of Ocnița	Vrancea

f) Necropolises and sacred areas - The Iron Era

No	Name	Administrative-territorial unit	County
f)1	Incineration necropolis of tumuli of the type Ferigile-Tigveni (in the point of "Toplița")	Commune of Poiana Lacului, village of Cepari	Argeș
f)2	Incineration necropolis of tumuli (in the point of "Bălteni")	Commune of Tigveni, village of Tigveni	Argeș
f)3	Area of funeral tumuli; tumulus tomb	Commune of Cucuteni, village of Cucuteni	Iași
f)4	Sacred area - ritual pits; Dacian settlement (in the point of "Dealul Turcului ")	City of Sighișoara	Maramureș
f)5	Area of ritual Dacian pits; fortifications with wall and ditch (in the point of "Dealul Măgura")	Commune of Mirșid, village of Moigrad	Sălaj
f)6	Alignments of funeral tumuli and isolated tumuli	Commune of Valea Nucarilor, village of Aghighiol	Tulcea

No	Name	Administrative-territorial Unit	County
f)7	Incineration necropolis of tumuli – of the group Ferigile - Barsești	Commune of Costești, village of Costești	Vâlcea
f)8	Incineration necropolis of tumuli – of the group Ferigile - Barsești (in the point of "Lacul Dumbrăvii")	Commune of Bârsănești, village of Bârsănești	Vrancea

g) Roman castrums and associated civil settlements; Roman -Byzantine fortifications

No	Name	Administrative-territorial unit	County
g)1	Roman Castrum of the Gemina XIII th Legion	City of Alba Iulia	Alba
g)2	The stone castrum of Jidava; canabae; earth castrum	City of Câmpulung	Argeș
g)3	Roman Castrum of stone; canabae (in the point of "Peste ziduri")	City of Caransebeș, village of Jupa	Caraș-Severin
g)4	The Roman city of Tibiscum (in the point of "Iaz")	City of Caransebeș	Caraș-Severin
g)5	Roman Castrum; canabae (in the point of " Cetate")	City of Turda	Cluj
g)6	The Roman city of Potaissa	City of Turda	Cluj
g)7	The Roman Castrum of Gilău	Commune of Gilău, village of Gilău	Cluj
g)8	The Roman Castrum of Cășeu	Commune of Cășeu, village of Cășeu	Cluj
g)9	Roman and Roman-Byzantine fortifications; port installations; civil settlement; the military Roman castrum	Commune of Topalu, village of Capidava	Constanța
g)10	The The Roman Castrum of Sucidava (in the point of "Bratca")	Commune of Aliman, village of Dunăreni	Constanța
g)11	The Getic fortress; the early mediaeval fortress (in the point of " Dealul Muzait")	Commune of Aliman, village of Dunăreni	Constanța
g)12	The Roman fortress of Axiopolis	Town of Cernavodă	Constanța
g)13	The Roman fortress of Carsium	Town of Hârșova	Constanța
g)14	The Roman fortress of Sucidava	Commune of Lipnița, village of Izvoarele	Constanța
g)15	The Roman-Byzantine fortress of Cius	Commune of Gârliciu, village of Gârliciu	Constanța
g)16	Roman Castrum and civil settlement of Tirighina Bârboși	City of Galați	Galați
g)17	Roman Castrum, civil settlement, thermal baths, temples, customs, the area of necropolises, Postroman housing	Commune of Vețel, village of Vețel	Hunedoara
g)18	The ruins of the Roman city	City of Drobeta-Turnu Severin	Mehedinți
g)19	The ruins of the Bridge of Trajanus, of the Roman castrum and thermal baths	City of Drobeta-Turnu Severin	Mehedinți
g)20	The ruins of the mediaeval church	City of Drobeta-Turnu Severin	Mehedinți
g)21	The Porolissum archeologic compound: two Roman castrums, the Porolissum Roman town, the sanctuaries, the amphitheatre; the defence system including survey towers (in the point of "Pomet", "Citera", "Dealul Fericii", "La Poiana")	Commune of Mirșid, village of Moigrad-Porolissum	Sălaj
g)22	The Roman castrum of Buciumi	Commune of Buciumi, village of Buciumi	Sălaj

No	Name	Administrative-territorial Unit	County
g)23	The Roman-Byzantine fortress of Dinogetia; the civil settlement on the island; the mediaeval fortress (in the point of "Bisericuța")	Commune of Jijila, village of Garvăn,	Tulcea
g)24	The Roman fortress of Noviodunum, the Getic settlement, the medieval settlement (in the point of "La Pontonul Vechi")	Town of Isaccea	Tulcea
g)25	The Roman fortress of Slasovia	Commune of Mahmudia, village of Mahudia	Tulcea
g)26	The Halmyris fortress	Commune of Murighiol, village of Murighiol	Tulcea
g)27	The Zaporojeni fortress	Commune of Murighiol, village of Dunavățul de Jos	Tulcea
g)28	The Arrubium Roman fortress	Town of Măcin	Tulcea
g)29	The Beroe Roman fortress (in the point of "Piatra-Frecăței")	Commune of Ostrov, village of Ostrov	Tulcea
g)30	The Roman and Roman-Byzantine fortress of Ibida (Libida); the Christian basilica; the monastery (in the point of "Cetatea Fetei")	Commune of Slava Cercheză, village of Slava Rusă	Tulcea
g)31	The Aegyssus Roman fortress	City of Tulcea	Tulcea
g)32	The Thracian-Getic fortress, the Roman town; two Roman-Byzantine fortresses (in the point of "Iglița")	Commune of Turcoaia, village of Turcoaia	Tulcea
g)33	The Arutela Roman castrum (in the point of "Poiana Bivolari ")	Town of Călimănești, village of Căciulata	Vâlcea

h) Ancient cities

No	Name	Administrative-territorial unit	County
h)1	Apulum; the Roman cities Colonia Nova Apulensis and Colonia Aurelia Apulensis	City of Alba Iulia	Alba
h)2	The vestiges of the ancient city Napoca - the precincts wall, housing, the Roman residential district, the Roman phorum	City of Cluj Napoca	Cluj
h)3	The ancient city of Tomis	City of Constanța	Constanța
h)4	Tropaeum Traiani - Roman and Roman-Byzantine fortress	Commune of Adamclisi, village of Adamclisi	Constanța
h)5	The fortress and civil settlement of Histria	Commune of Istria, village of Istria	Constanța
h)6	The ancient city Callatis	Town of Mangalia	Constanța
h)7	The colony Ulpia Traiana Augusta Dacica Sarmizegetusa - the Capital of the Roman province Dacia	Commune of Sarmizegetusa, village of Sarmizegetusa	Hunedoara
h)8	The ancient city Sucidava, on the location of the Geto-Dacian settlement	Town of Corabia	Olt
h)9	The Roman city Romula, Capital of Dacia Malvensis, on the location of the Geto-Dacian settlement	Commune of Dobrosloveni, village of Reșca	Olt
h)10	The ancient fortress Orgame/Argamum - Greek colony and, later, Roman and Roman -Byzantine city (in the point 'Capul Dolojman')	Commune of Jurilovca, village of Jurilovca	Tulcea

i) Buildings

No	Name	Administrative-territorial unit	County
i)1	The triumphal monument 'Trophaeum Traiani'	Commune of Adamclisi, village of Adamclisi	Constanța
i)2	Tomb with paintings	City of Constanța	Constanța
i)3	The Tomis building with mosaic	City of Constanța	Constanța
i)4	The Germaisa complex of Roman bath with thermal water	Commune of Geoagiu, village of Geoagiu	Hunedoara
i)5	The Palaeo-Christian basilica with tomb	Commune of Niculițel, village of Niculițel	Tulcea
i)6	The three-lobed early medieval church	Commune of Niculițel, village of Niculițel	Tulcea

j) Medieval monuments identified through archeological research

No	Name	Administrative-territorial unit	County
j)1	The vestiges of the residence of the Borșa family; monastic compound (in the point of 'Dealul Boțoca')	Commune of Șoimi, village of Sânnicolau de Beiuș	Bihor
j)2	Fortified church and necropolis (in the point of 'Dealul Cetate')	Commune of Ciclova Română, village of Ilidia	Caraș-Severin
j)3	Medieval architectural compound: church of rotunda type; fortified dwelling; necropolis (in the point of 'Dealul Oblita')	Commune of Ciclova Română, village of Ilidia	Caraș-Severin
j)4	The fortified mediaeval compound (in the point of 'Fortress')	Commune of Dăbâca, village of Dăbâca	Cluj
j)5	The Byzantine fortress (in the point of 'Păcuiul lui Soare')	Commune of Ostrov, village of Ostrov	Constanța
j)6	Compound in the rock including 6 small churches, galleries, vaults, tombs	Town of Basarabi	Constanța
j)7	The vestiges of the mediaeval town of 'Târgul de Floci' (in the point of 'La mănăstire')	Commune of Giurgeni, village of Giurgeni	Ialomița
j)8	The compound of mediaeval vestiges in the city limits	City of Iași	Iași
j)9	The foundations of the princely church of Dragoș Vodă	Commune of Giulești, village of Giulești	Maramureș
j)10	The new fortress of Romanului	Commune of Sagna, village of Gădini	Neamț
j)11	The aristocratic court with the church and vault (in the point of 'Brătuleț')	Commune of Grumăzești, village of Netezi	Neamț
j)12	Fortress (in the point 'La Ciungă')	Commune of Ceterașu, village of Sion	Prahova
j)13	The fortress of Tabla Buții	Commune of Ceterașu, village of Sion	Prahova
j)14	The Șcheia fortress	City of Suceava	Suceava
j)15	Ruins of the church and the aristocratic court (in the point of 'Siliște')	Commune of Volovăț, village of Volovăț	Suceava

k) Archeological reserves with sites containing long inhabited strata – settlements and necropolises

No	Name	Administrative-territorial unit	County
k)1	The Geto-Dacian fortifications and settlement; the mediaeval fortification, settlement and vestiges of three churches (in the point of 'Cetățuia')	Commune of Cetățeni, village of Cetățeni	Argeș
k)2	The settlement and necropolises (in the point of 'Dealul Viilor')	City of Sighișoara, town of Viilor	Mureș
k)3	The Târgșor archeological reserve- neolithic, iron era settlements, Roman castrum and baths, Sântana - Cerneahov necropolis, mediaeval vestiges (in the point of 'La Mănăstire')	Commune of Târgușoru Vechi, village of Târgușoru Vechi	Prahova
k)4	The 31 sites of all eras: neolithic, bronze, Dacian; Dacian-Roman compounds, important handicraft centre, settlements Ipotești - Căndești, mediaeval vestiges (in the point of 'La Siliște', 'Rulă', 'La Puțul lui Buroiu')	Commune of Fântânele, village of Vadu Săpat	Prahova
k)5	Settlements and necropolises	Commune of Brăteiu, village of Brăteiu	Sibiu
k)6	Archeological vestiges of different times: settlement of 'Cucuteni A' type , bastarnique necropolis; Getic necropolis, carpic necropolis and settlement of 'Sântana de Mureș - Cerneahov' type (in the point of 'Dealul Teilor')	Commune of Poienești, village of Poienești	Vaslui

II. ADMINISTRATIVE / TERRITORIAL UNITS WITH VERY HIGH CONCENTRATION OF BUILT-UP CULTURAL HERITAGE OF NATIONAL INTEREST

County	Administrative-territorial unit
ALBA	Cities Towns Communes Alba Iulia, Aiud, Blaj Abrud, Cămpeni, Cugir, Sebeș, Teiuș, Zlatna Avram Iancu, Berghin, Bucium, Călnic, Cetatea de Baltă, Ciugud, Cricău, Daia Română, Fărău, Galda de Jos, Gârbova, Ighiu, Jidvei, Lupșa, Lopadea Nouă, Meteș, Mihaiț, Pianu, Ponor, Rădești, Râmeț, Roșia Montană, Săliște, Săsciori, Sântimbru, Stremț, Șona, Vadu Moșilor, Vidra, Vințu de Jos
ARAD	Cities Towns Communes Arad Lipova, Nădlac, Pâncota Brazii, Fântânele, Gurahonț, Hălmagiu, Pecica, Pleșcuța, Sântana, Șeitin, Zăbrani
ARGEȘ	Cities Towns Communes Pitești, Câmpulung, Curtea de Argeș Aninoasa, Arefu, Băiculești, Bălilești, Brăduleț, Budeasa, Cetățeni, Corbi, Coșești, Cotmeana, Dâmbovicioara, Domnești, Mălureni, Moșoia, Mușătești, Pietroșani, Poiana Lacului, Rucăr, Ștefănești, Tigveni, Țițești

County		Administrative-territorial unit
BACĂU	Cities	Bacău, Onești
	Towns	Comănești, Moinești, Târgu Ocna
	Communes	Bârsănești, Berești-Tazlău, Berzumți, Bogdănești, Cașin, Căiuți, Horbasca, Gura Văii, Horgești, Livezi, Mărgineni, Negr, Nicolae Bălcescu, Poduri, Sânduleni, Săucești, Ștefan cel Mare, Târgu Trotuș, Traian
BIHOR	Cities	Oradea
	Towns	Beiuș
	Communes	Biharia, Derna, Drăgănești, Girișu de Criș, Pomezeu, Răbăgani, Remetea, Rieni, Sălacea, Sâmbăta, Sântandrei, Șoimi, Tețchea, Uileacu de Beiuș
BISTRIȚA NĂSĂUD	Cities	Bistrița
	Towns	Beclean
	Communes	Budacu de Jos, Cetate, Dumitra, Galații Bistriței, Livezile, Mărișelu, Milaș, Șieu-Măgheruș, Șieu-Odorhei, Teaca
BOTOȘANI	Cities	Botoșani, Dorohoi
	Towns	
	Communes	Bălușeni, Brăești, Bucecea, Corni, Curtești, Frumușica, Leurda, Mihai Eminescu, Mitoc, Ripiceni, Văculești, Vârfu Câmpului, Vlădeni
BRAȘOV	Cities	Brașov, Făgăraș
	Towns	Codlea, Râșnov, Rupea, Săcele, Zărnești
	Communes	Beclea, Bod, Bran, Bunești, Cața, Cincu, Dumbrăvița, Feldioara, Hălchiu, Hărman, Homorod, Jibert, Lisa, Moieciu, Ormeniș, Prejmer, Sânpetru, Șercaia, Șoarș, Voila, Vulcan
BRĂILA	Cities	Brăila,
	Towns	
	Communes	Măxineni,
BUZĂU	Cities	Buzău, Râmnicu Sărat
	Towns	
	Communes	Bozioru, Merei, Tisău, Vernești
CARAȘ - SEVERIN	Cities	Reșița, Caransebeș
	Towns	Anina, Băile Herculane, Bocșa, Moldova Nouă, Oravița
	Communes	Bănia, Berzasca, Bozovici, Carașova, Ciclova Română, Eftimiu Mugur, Păltiniș, Poronini, Pojejena, Prigor, Sichevita, Târnova
CĂLĂRAȘI	Cities	Oltenița
	Towns	
	Communes	Plătărești
CLUJ	Cities	Cluj Napoca, Dej, Turda
	Towns	Gherla, Huedin
	Communes	Aghireșu, Aiton, Apahida, Baci, Bobâlna, Bonțida, Căianu, Căpușu Mare, Cășeu, Cățcău, Chinteni, Ciucea, Ciurila, Dăbâca, Feleacu, Florești, Gârbău, Gilău, Iara, Izvoru Crișului, Mănăstireni, Mica, Mintiu Gherlii, Petrești de Jos, Poieni, Săvădisla, Spânaul, Sic, Tureni, Vad
CONSTANȚA	Cities	Constanța, Mamgalia, Medgidia
	Towns	Basarabi, Cernavodă, Eforie, Hârșova, Techighiol
	Communes	Adamclisi, Aliman, Gârliciu, Independența, Istria, Lipnița, Mircea Vodă, Oltina, Ostrov, Poarta Albă, Rasova, Palazu, Tuzla, Valu lui Traian
COVASNA	Cities	Sfântu Gheorghe
	Towns	Covasna, Târgu Secuiesc
	Communes	Brăduț, Ghelintă, Ilieni, Sânzieni, Turia

County	Adminstrative-territorial unit	
DÂMBOVIȚA	Cities	Târgoviște
	Towns	Fieni, Pucioasa
	Communes	Aninoasa, Bărbulețu, Brănești, Buccciumeni, Cândești, Cobia, Doicești, Glodeni, Gura Ocniței, Malu cu Flori, Moroieni, Moțâieni, Ocnița, Pietroșița, Potlogi, Pucheni, Răzvad, Runcu, Șotânga, Voinești, Vulcana Băi
DOLJ	Cities	Craiova, Calafat
	Towns	
	Communes	Almăj, Brabova, Calopăr, Cernătești, Coțofenii de Jos, Podari, Șimnicu de Sus, Sopot, Țuglui
GALAȚI	Cities	Galați
	Towns	
	Communes	
GIURGIU	Cities	Giurgiu
	Towns	Mihăilești
	Communes	Comana, Florești-Stoenești, Hotarele
GORJ	Cities	Târgu Jiu
	Towns	Bumbești-Jiu
	Communes	Alimpești, Aninoasa, Arcani, Baia de Fier, Bălănești, Bălești, Benjești-Ciocadia, Bumbești-Pițic, Crușeț, Glogova, Lelești, Padeș, Peștișani, Polovragi, Prigoria, Roșia de Amaradia, Runcu, Samarinești, Săcelu, Schela, Scoarța, Slivilești, Stănești, Telești, Tismana, Turcinești
HARGHITA	Cities	Miercurea-Ciuc, Odorheiu Secuiesc
	Towns	Borsec, Cristuru Secuiesc, Gheorgheni, Toplița
	Communes	Bilbor, Brădești, Ciucsângeorgiu, Cârța, Dârjiu, Ditrău, Feliceni, Gălăuțași, Lăzarea, Mugeni, Sărmaș, Sândominic, Suseni, Ulieș, Zetea
HUNEDOARA	Cities	Deva, Hunedoara, Orăștie, Brad
	Towns	Călan, Hațeg, Simeria
	Communes	Baia de Criș, Baru, Bănița, Boșorod, Cârjiți, Criscior, Densuș, Geoagiu, Ghelari, Gurasad, Hărau, Orăștioara de Sus, Peștișu Mic, Pui, Răchitova, Rapoltu Mare, Râu de Mori, Ribița, Sarmizegetusa, Sălașu de Sus, Sântămăria-Orlea, Teliucu Inferior, Toplița, Unirea, Vața de Jos, Vețel
IALOMIȚA	Cities	
	Towns	
	Communes	
IAȘI	Cities	Giurgeni Iași, Pașcani
	Towns	Hârlău, Târgu Frumos
	Communes	Bârnova, Ciurea, Cotnari, Cucuteni, Deleni, Dobrovăț, Dumești, Heleșteni, Lețcani, Miroslava, Miroslovești, Ruginoasa, Strunga
ILFOV	Cities	
	Towns	
	Communes	Mogoșoaia, Snagov
MARAMUREȘ	Cities	Baia Mare, Sighetu Marmației
	Towns	Baia Sprie, Borșa, Cavnic, Târgu Lăpuș, Vișeu de Sus
	Communes	Bârsana, Bogdan Vodă, Botiza, Budești, Călinești, Cernești, Copalnic-Mănăstur, Cupșeni, Desești, Dumbrăvița, Giulești, Groși, Leud, Lăpuș, Mireșu Mare, Ocna Șugatag, Poienile Izei, Remetea Chioarului, Rozavlea, Săcălășeni, Săcel, Strâmtura, Suciu de Sus, Sisești, Șoncuta Mare, Ulmeni, Vadul Izei, Vișeu de Jos
MEHEDINȚI	Cities	Drobeta-Tirnu Severin
	Towns	Baia de Aramă, Strehăia
	Communes	Balta, Breznița-Ocol, Broșteni, Butoiești, Gârla Mare, Izvorul Bârzii, Ponoarele, Șimian, Șișești, Târna

County	Administrative-territorial unit	
MUREȘ	Cities	Târgu Mureș, Reghin, Sighișoara, Târnăveni
	Towns	Iernut, Luduș
	Communes	Acățari, Adămuș, Apold, Așintiș, Brahnea, Batoș, Băgaciu, Bălăușeri, Bichiș, Bogata, Brâncovenești, Ceaușu de Câmpie, Cucerdea, Cuci, Daneș, Gălești, Gornești, Lunca, Nadeș, Pănet, Păsăreni, Saschiz, Sârmașu, Sâncraiu de Mureș, Suseni, Vânători
NEAMȚ	Cities	Piatra-Neamț, Roman
	Towns	Târgu-Neamț
	Communes	Agapia, Bălțătești, Bârgăuani, Bodești, Borlești, Crăcăoani, Dobreni, Dragomirești, Fărcașa, Girov, Grumăzești, Pângărați, Piatra Șoimului, Războieni, Roznov, Sagna, Săvinești, Ștefan cel Mare, Tazlău, Vânători-Neamț, Vișoara, Zănești
OLT	Cities	Slatina, Caracal
	Towns	Corabia
	Communes	Brâncoveni, Curtișoara, Dobrosloveni, Gârcov, Giuvărăști, Leleasca, Oboga, Priseaca, Strejești
PRAHOVA	Cities	Ploiești, Câmpina
	Towns	Azuga, Breaza, Bușteni, Comarnic, Sinaia, Slănic, Vălenii de Munte
	Communes	Apostolache, Brebu, Cerașu, Cornu, Drajna, Fântânele, Filipeștii de Târg, Izvoarele, Măneciu, Posești, Starchiorjd, Teișani, Târgșoru Vechi
SATU MARE	Cities	Satu Mare, Carei
	Towns	
	Communes	Acăș, Călinești-Oaș, Medieșu Aurit, Socond
SĂLAJ	Cities	Zalău
	Towns	Cehu Silvaniei, Jibou, Șimleu Silvaniei
	Communes	Agrij, Alamașu, Bălan, Buciumi, Crasna, Creaca, Cuzăplac, Dragu, Fildu de Jos, Hida, Horoatu Crasnei, Letca, Meseșeni de Jos, Mirșid, Năpradea, Românași, Sălățiș, Sânmihaiu Almașului, Someș-Oddorhei
SIBIU	Cities	Sibiu, Mediaș
	Towns	Agnita, Avrig, Cisnădie, Dumbrăveni, Ocna Sibiului, Tâlmăciu
	Communes	Alțâna, Apoldu de Jos, Arpașu de Jos, Ațel, Axente Sever, Bazna, Bârghiș, Biertan, Brăteiu, Brădeni, Bruiu, Cârța, Chirpăr, Cristian, Dârlos, Gura Râului, Hoghilag, Iacobeni, Laslea, Marpod, Merghindeal, Micăsasa, Miercurea Sibiului, Mihăileni, Moșna, Nocrich, Poplaca, Porumbacu de Jos, Racoviță, Rășinari, Roșia, Sadu, Săliște, Slimnic, Șeica Mare, Șelimbăr, Șura Mare, Șura Mică, Tilișca, Turnu Roșu, Valea Viilor, Vurpăr
SUCEAVA	Cities	Suceava, Câmpulung Moldovenesc, Fălticeni, Rădăuți
	Towns	Gura Humorului, Siret, Solca, Vatra Dornei
	Communes	Arbore, Baia, Bălcăuți, Botoșana, Breaza, Broșteni, Cacica, Cajvana, Calafindești, Dărmănești, Dolhasca, Dolhești, Drăgușeni, Milișăuți, Grămești, Grănicești, Horodnic, Marginea, Mănăstirea Humorului, Mitocu Dragomirnei, Moldovița, Pătrăuți, Preutești, Putna, Râșca, Satu Mare, Slatina, Sucevița, Șcheia, Todirești, Udești, Valea Moldovei, Vatra Moldoviței, Volovăț, Vulturești
TELEORMAN	Cities	Alexandria, Roșiorii de Vede, Turnu Măgurele
	Towns	Zimnicea
	Communes	Buzescu, Islaz, Mavrodin, Măgura, Nanov, Peretu, Plosca, Vitănești, Putineiu, Salcia, Troianu

County	Administrative-territorial unit	
TIMIȘ	Cities	Timișoara, Lugoj
	Towns	Făget
	Communes	Banloc, Gătaia, Margina
TULCEA	Cities	Tulcea
	Towns	Babadag, Isaccea, Măcin, Sulina
	Communes	Baia, Beidaud, Carcaliu, Ciamurlia de Jos, Crișan, Frecăței, Jijila, Jurilovca, Mahmudia, Mihai Bravu, Mihail Kogălniceanu, Murighiol, Nalbant, Niculițel, Nufăru, Ostrov, Sarichioi, Slava Cercheză, Turcoaia, Valea Nucarilor
VASLUI	Cities	Vaslui, Bârlad, Huși
	Towns	
	Communes	Arsura, Bogdana, Boțești, Bunești-Averești, Codăești, Duda-Epurenii, Gherghești, Lipovăț, Poienești, Puiești, Solești, Ștefan cel Mare, Tanacu
VÂLCEA	Cities	Râmnicu Vâlcea
	Towns	Băile Govora, Băile Olănești, Brezoi, Călimănești, Horezu, Ocnele Mari
	Communes	Alunu, Bărbățești, Berislăvești, Boișoara, Budești, Bujoreni, Bunești, Căineni, Costești, Dăești, Frâncești, Golești, Goranu, Lungești, Mateești, Măldărești, Mihăești, Perişani, Pietrari, Racovița, Runcu, Sălătrucel, Slătioara, Stoenesti, Ștefănești, Tomșani, Vaideeni, Vlădești, Voicești
VRANCEA	Cities	Focșani
	Towns	Mărășești, Odobești, Panciu
	Communes	Bârsești, Bolotești, Broșteni, Câmpineanca, Cârligele, Cotești, Dumbrăveni, Jariștea, Mera, Ruginești, Țifești, Urechești, Valea Sării
BUCHAREST	Cities	Bucharest

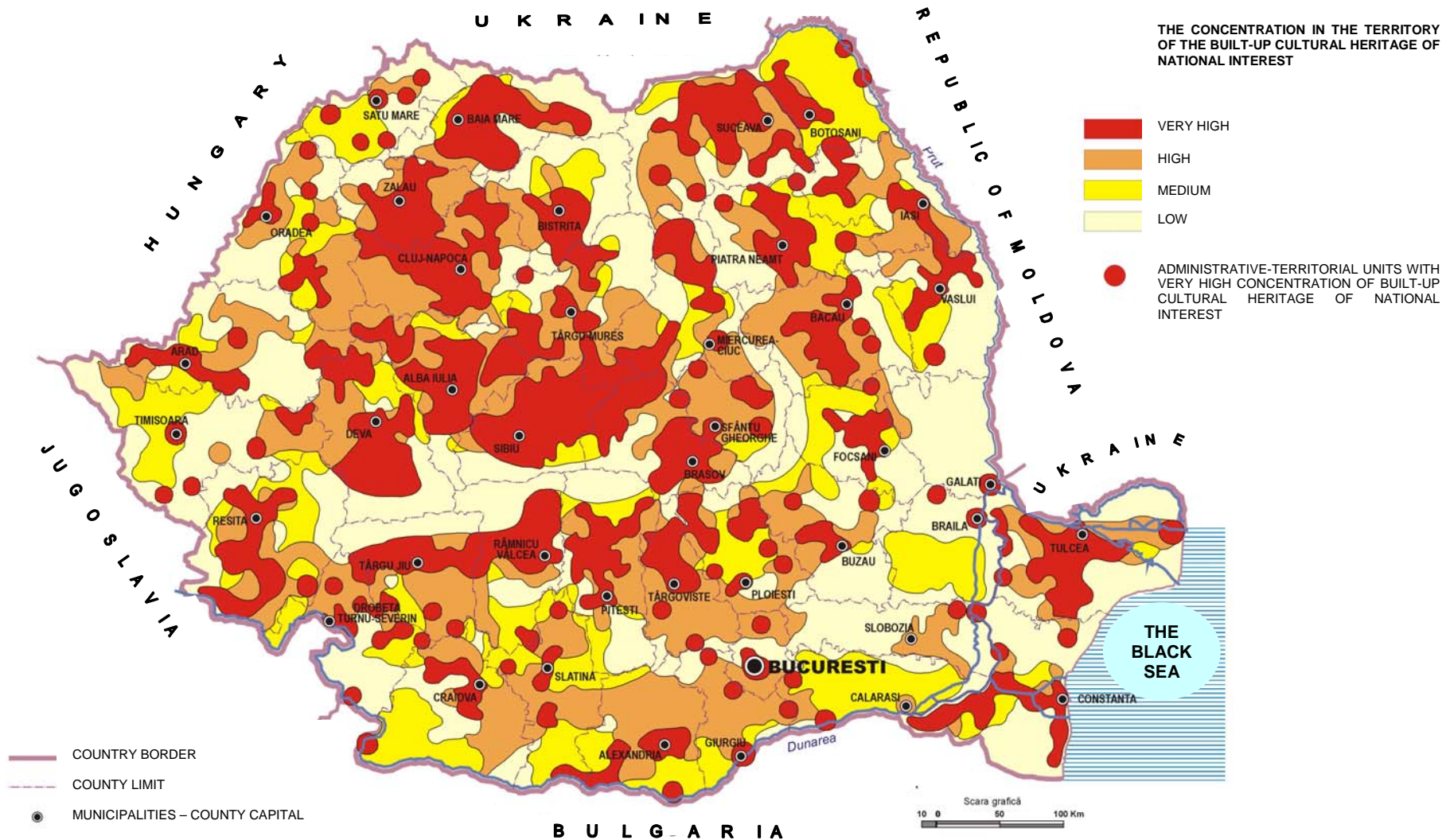
NOTE :

- The administrative - territorial units with a very high concentration of built-up cultural heritage of national interest in this annex include either a complexity of cultural values, or isolated historical monuments of an outstanding national value.
- The concentration in the territory of the built-up cultural heritage of national interest is shown in Annex IV.

SPATIAL PLANNING OF THE NATIONAL TERRITORY

SECTION III - PROTECTED AREAS

BUILT UP AREAS



DECREE
on the Enactment of the Law on the Approval of the Spatial Planing of the National Territory -
Section III -
Protected Areas

Pursuant to Article 77 (1) and Article 99 (1) of the Romanian Constitution,

The President of Romania decrees:

Sole Article - The Law on the approval of the Spatial Planning of the National Territory - Section III – Protected Areas has been promulgated and its publishing in the Official Gazette of Romania is prescribed.

PRESIDENT OF ROMANIA
EMIL CONSTANTINESCU

Bucharest, March 2, 2000.
No. 41